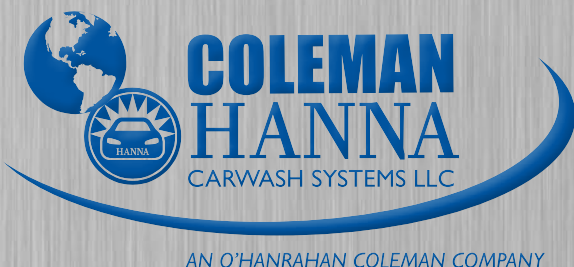


# Tire Glaze Retrofit

## *Service Manual*



5842 W 34th St, Houston, TX 77092  
1.800.999.9878 • 1.713.683.9878  
[www.colemanhanna.com](http://www.colemanhanna.com)



Find us on Facebook:  
[/ColemanHannaCarwash](https://www.facebook.com/ColemanHannaCarwash)

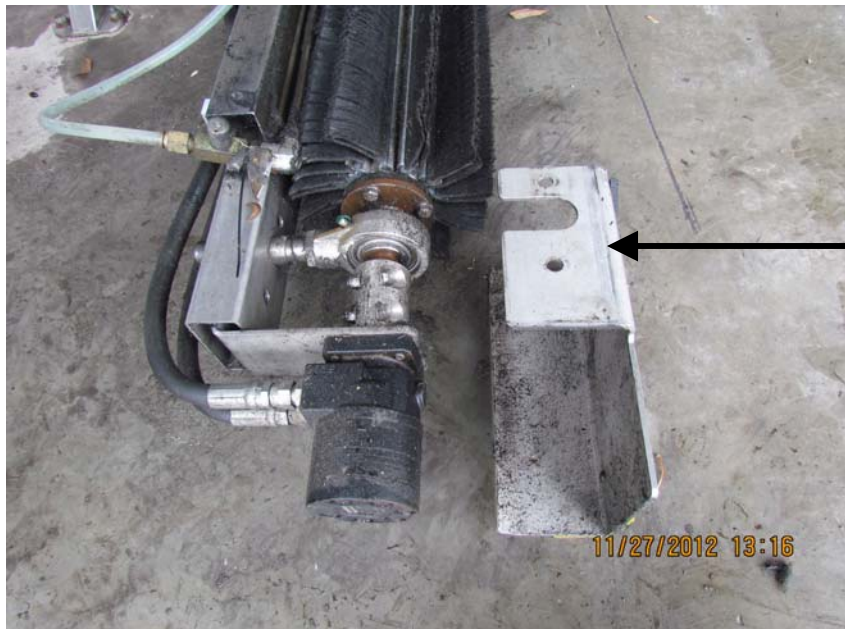


**RETROFIT  
PARTS REQUIRED**

- WHEEL BRUSHES**
- SPINDLES**
- COVERS WITH CHEMICAL APPLICATOR PLUMBING**
- ¼ - 20 ALLEN HEAD BOLTS**
- ¼ x ¾" SS SELF TAPPING SCREWS**
- HOSE CLAMPS**
- 3/8-16x1 BOLTS**
- 2 BRUSH STOPS WITH ANCHORS**
- 2 90 DEGREE GREASE FITTINGS**



**REMOVE  
BRUSH  
COVER**



**REMOVE EXIT  
END BEARING  
& MOTOR  
COVER**



- USING 3/32 ALLEN WRENCH, REMOVE 2 BEARING COLLAR SET SCREWS FROM BEARING AT ENTRANCE END.



- **USE A 9/16 WRENCH AND A PIPE WRENCH.**
- **USE PIPE WRENCH TO KEEP SHAFT FROM SPINNING AND REMOVE BOLTS FROM BRUSH SPINDLE ON EXIT END.**



- ONCE BOLTS ARE REMOVED, PULL OUT BRUSH.



- **PULL BRUSH SPINDLE OUT OF ENTRANCE END BEARING.**
- **REMOVE SPINDLE FROM ENTRANCE END OF BRUSH.**

REMOVE  
CHEMICAL  
SUPPLY  
LINE



REMOVE  
SUPPORT  
BRACKET



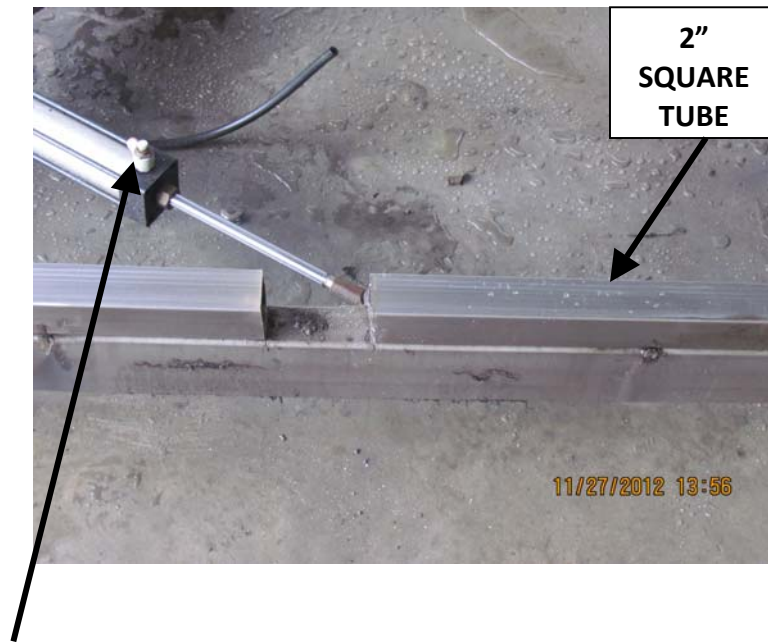




- USING A 1/8 ALLEN WRENCH, REMOVE SPLIT COLLAR SUPPORT BRACKET FROM FRAME AND REMOVE MANIFOLD PIPE.



- CUT OFF WELDED SPLIT COLLAR BRACKET & GRIND SMOOTH.



**NOTE: EXTEND ARM TO AVOID CUTTING NEEDLE VALVE.**

- **FIND CENTER LINE OF 2" SQUARE TUBE. CUT AND REMOVE A 4" SECTION (2" EACH SIDE OF CENTER) TO ALLOW FOR NEW MANIFOLD.**





- REMOVE EXIT END SPINDLE FROM OLD BRUSH. APPLY ANTI SEIZE ON SHAFT.



- **INSTALL SPINDLE INTO ENTRANCE END BEARING – DO NOT TIGHTEN SET SCREWS.**
- **MAKE SURE BEARING SET SCREWS ARE ON THE BRUSH SIDE.**
- **INSTALL A 90° DEGREE GREASE FITTING WHEN APPLICABLE.**



- **APPLY ANTI SEIZE TO BOLTS AND MOUNT EXIT & ENTRANCE END OF BRUSH TO SPINDLES.**



- TIGHTEN BOLTS ON FLANGE AND SET SCREWS ON BEARINGS.
- GREASE BEARINGS AND CHECK COUPLER.

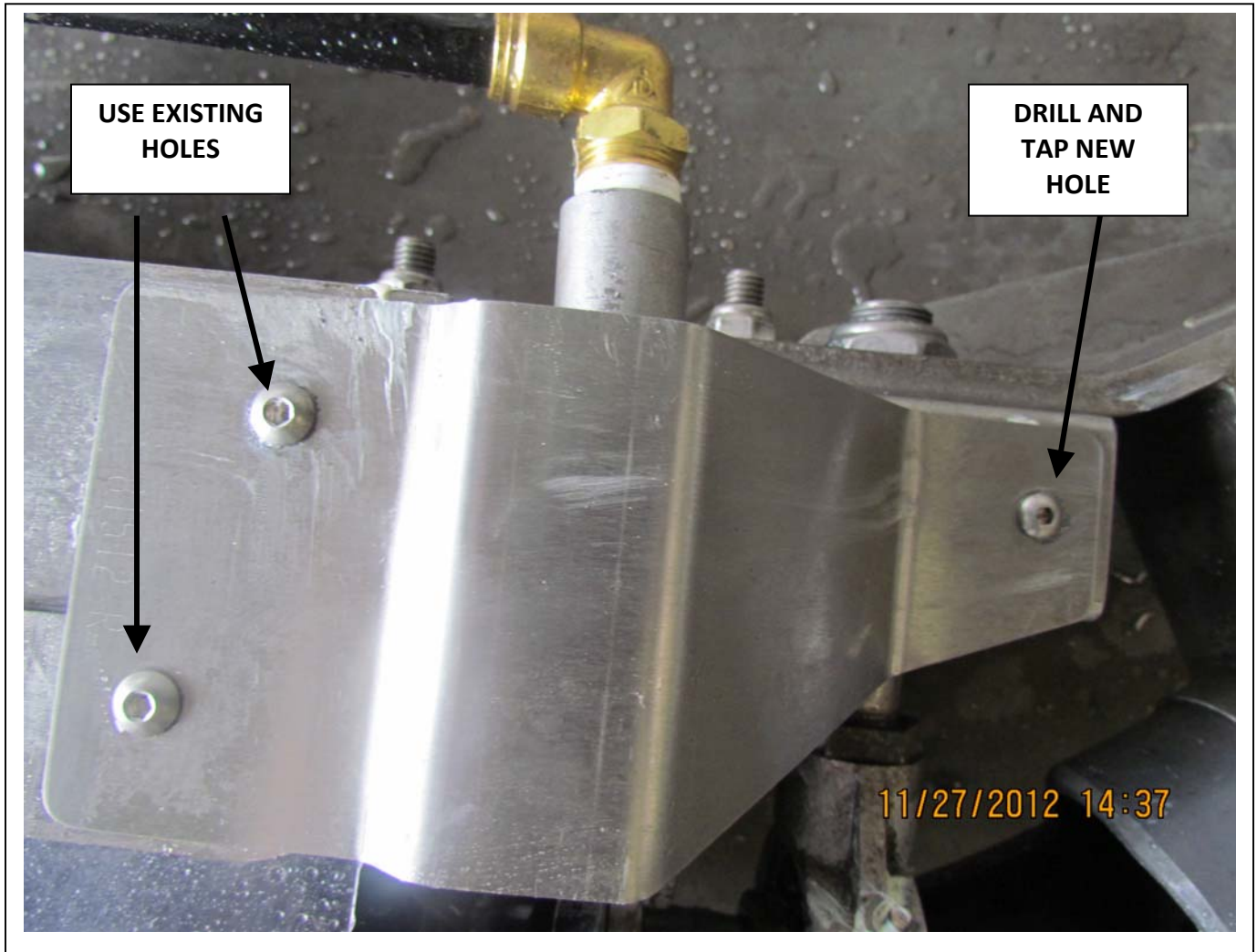


- **PLEASE MAKE SURE TO CHECK ALL SET SCREWS ON BEARINGS AND BOLTS ON FLANGE ARE TIGHTENED.**

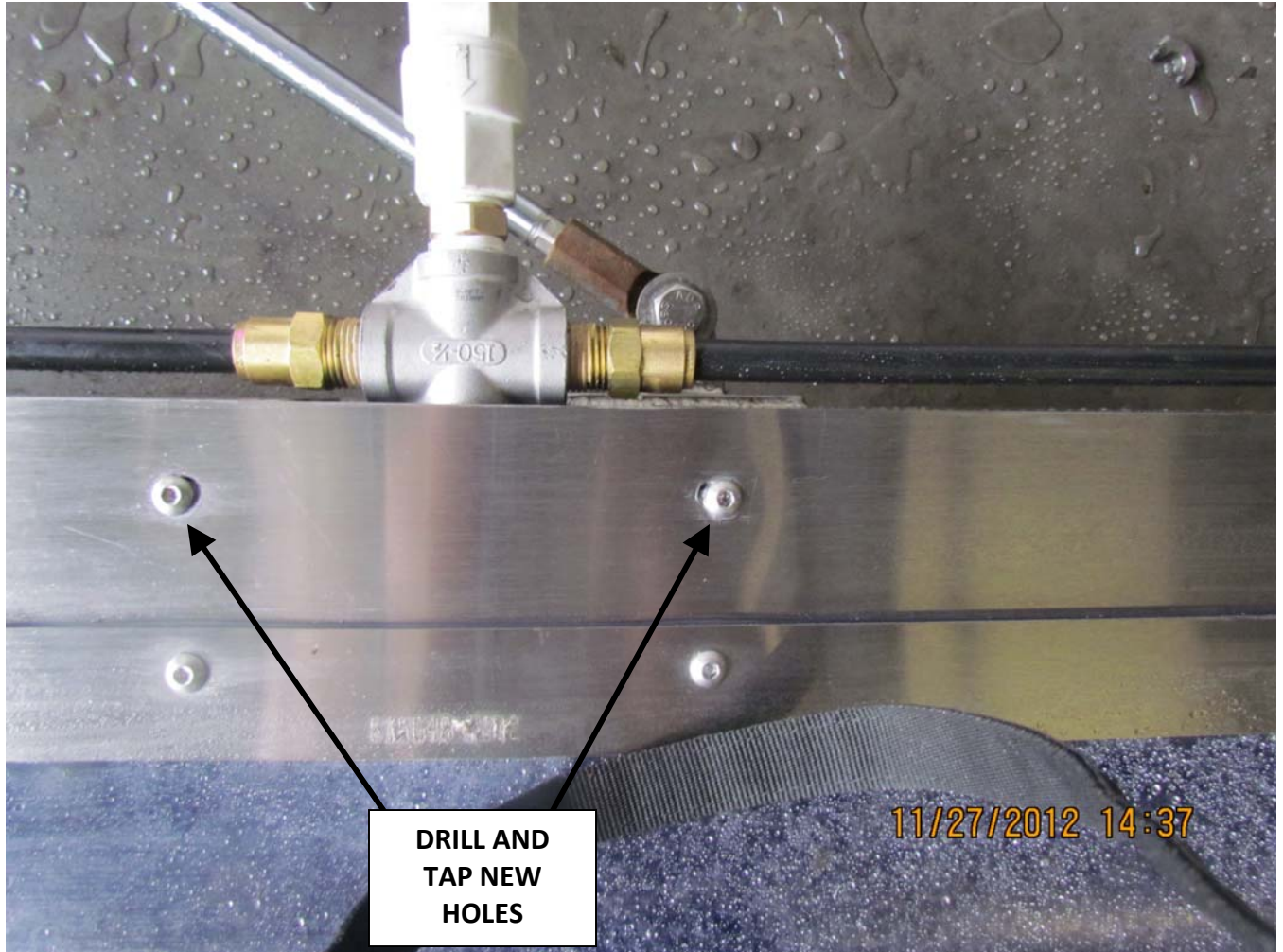




- REINSTALL BEARING AND MOTOR COVER



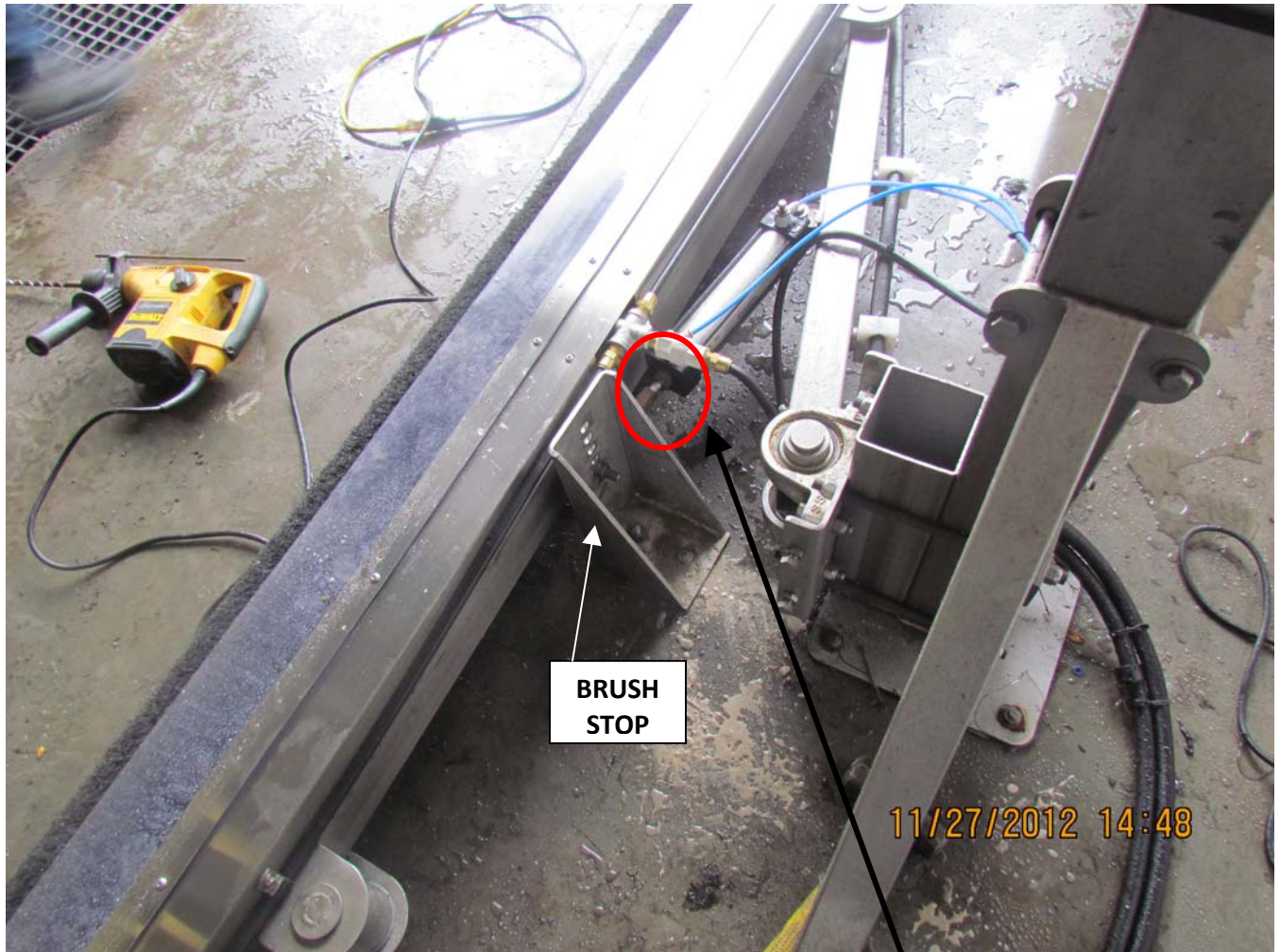
- **MOUNT COVER - DRILL AND TAP NEW HOLE, PUT ON RIGHT SIDE OF COVER.  
BOLTS USED ARE ¼ - 20**



- DRILL AND TAP NEW HOLES  $\frac{1}{4}$  - 20 THREADS.  
BOLTS USED ARE  $\frac{1}{4}$  - 20 X  $\frac{3}{4}$  "



- **INSTALL BRACKET USING  $\frac{1}{4}$  X  $\frac{3}{4}$  SS SELF TAPPING SCREWS.  
USE EXISTING CLAMPS.**



- 1) MOUNT BRUSH STOPS WHERE CYLINDER IS 1" FROM BEING FULLY SEATED.
- 2) ALIGN STOP AS CLOSE TO CENTER AS POSSIBLE.
- 3) ALIGN STOP AS TO NOT INTERFERE WITH HOSE.



- **ADJUST CHEMICAL FLOW AT PUMP TO MINIMUM FEED.**
- **THE BRUSH WILL GET MORE SATURATED WITH CHEMICAL THE MORE WASHES YOU DO.**

