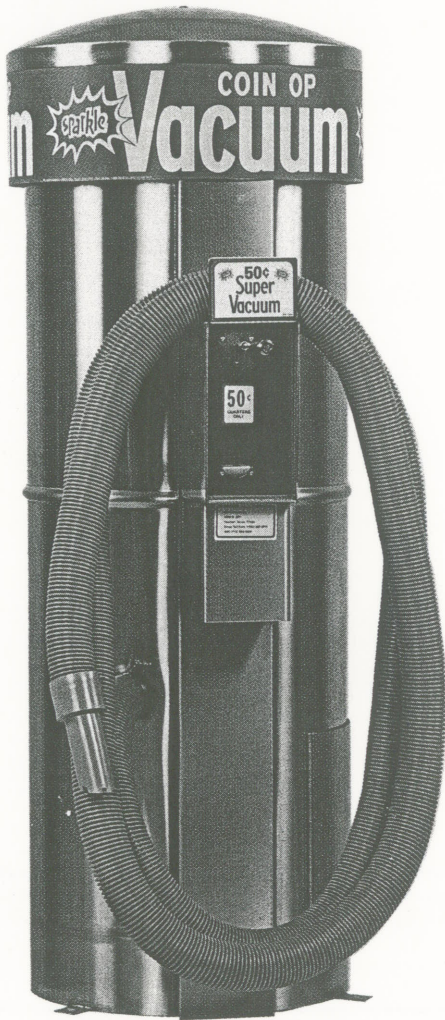




Standard Vacuum with Cash Box

Model 92000



MODEL 92000

Our Standard Sparkle Stainless Steel Vacuum.

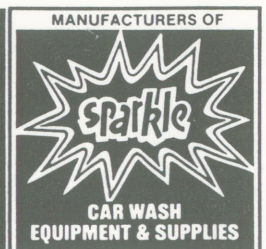
- Stainless Steel Dome with Full Decal
- 18 Gauge Stainless Steel Body
- 11 Gauge Stainless Steel Meter and Coin Box
- Recess High Security Coin Box
- Fuse Protected
- 2" Vacuum Hose and Cuff
- Solid State 110V Adjustable Timer
- Test Switch
- Self Cleaning Filter Bag
- 2 - 1.6 H.P. Vacuum Motors
- Dual Latch Clean Out Door

OPTIONAL FEATURES:

- Vault Ready
- Maximum Security Locking System
- Vendor Brackets and Vendor
- Collapsable Trash Bag
- Low Voltage 24V Timer
- Electronic Coin Acceptor
- Cycle Counter
- Quiet Model

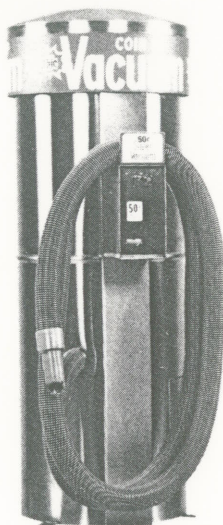
JIM COLEMAN COMPANY
CAR WASH SYSTEMS

"Total Systems Built Without Compromise"





Model 92005 • Standard Vacuum For Vault
Model 92000-VB • Combination Vacuum
& Vendor Brackets (Vendor Optional)



Model 92005

Model 92005

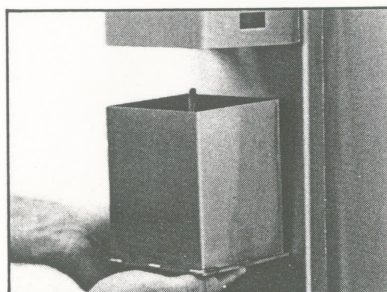
Our standard Sparkle Stainless Steel Vacuum same features as our Model 92000, except the cash box housing and cash drawer have been deleted for vault connection. Two inch stainless steel sleeve provided at bottom of cash box for 1½" pipe connection.

Model 92000-VB

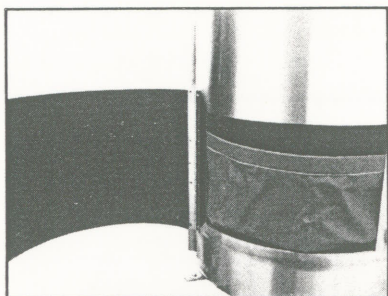
Our standard Sparkle Stainless Steel Vacuum with vendor bracket provided to mount towel vendor directly to vacuum. The most practical location for a vendor at your car wash.



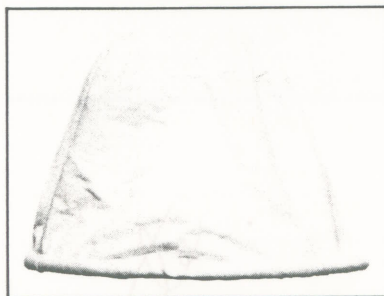
Model 92000-VB



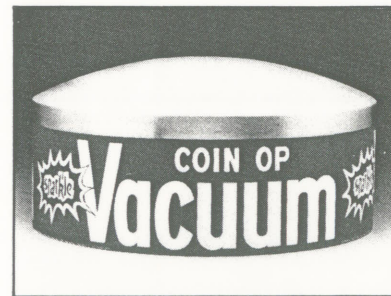
Cash Box



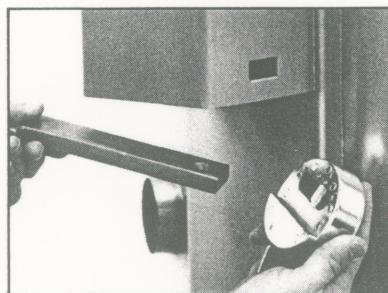
Dirt Door Gasket



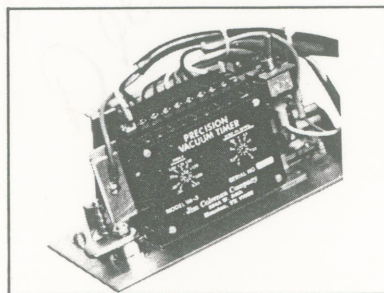
Filter Bag



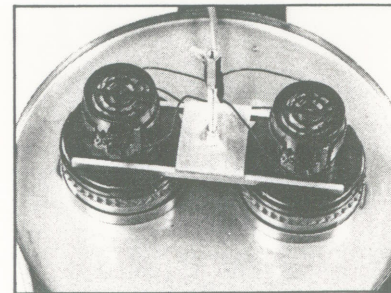
Stainless Steel Dome



High Security Lock



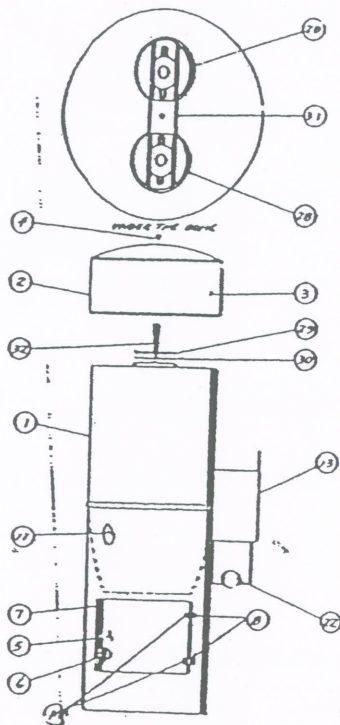
Timer Assembly 110 Volt



Motor Mount

SPARKLE SELF CLEANING FILTER BAG PART #92140

The Sparkle Self Cleaning Filter Bag (11) is a new and inovative means of keeping the Sparkle Vacuum operational. When properly cared for, this bag will last for an extended period, over the conventional vacuum filter bag. The following diagram and instructions will enable you to properly maintain, care and remove the filter bag.



- 1) When the vacuum cycle is initialized, the filter bag (11) is pulled up into the vacuum canister.
- 2) At the end of the cycle the bag drops down. There is a built-in weight in the filter bag.
- 3) This fall causes the bag to clean itself, making ready for the next cycle.
- 4) In the even that the filter bag must be removed, grasp the ring located in the groove at position A. Firmly pull down on this ring, causing the spring loaded ring to release, thus releasing the filter.
- 5) Remove the filter bag through the dirt door opening (5).
- 6) The filter bag is made of durable material, and after removal can be cleaned with a water hose.
- 7) To re-install the filter bag, insert spring ring into groove at point B. Gradually work the ring around the groove, holding it at the original beginning place until it snaps into place.
- 8) In case the filter bag has been torn or stolen, then it must be replaced. There are also screens (29) under the motor (28) for protection if the vacuum is turned on in this state. In the event this happens, perform the following procedures before putting the vacuum back into operaton:
 - A. Loosen holddown bolt (32).
 - B. Remove vacuum motors (28).
 - C. Remove and clean stainless steel filter screens (30).
 - D. Reinstall screens (30) and motors (28).
 - E. Tighten holddown bolts snuggly (32).

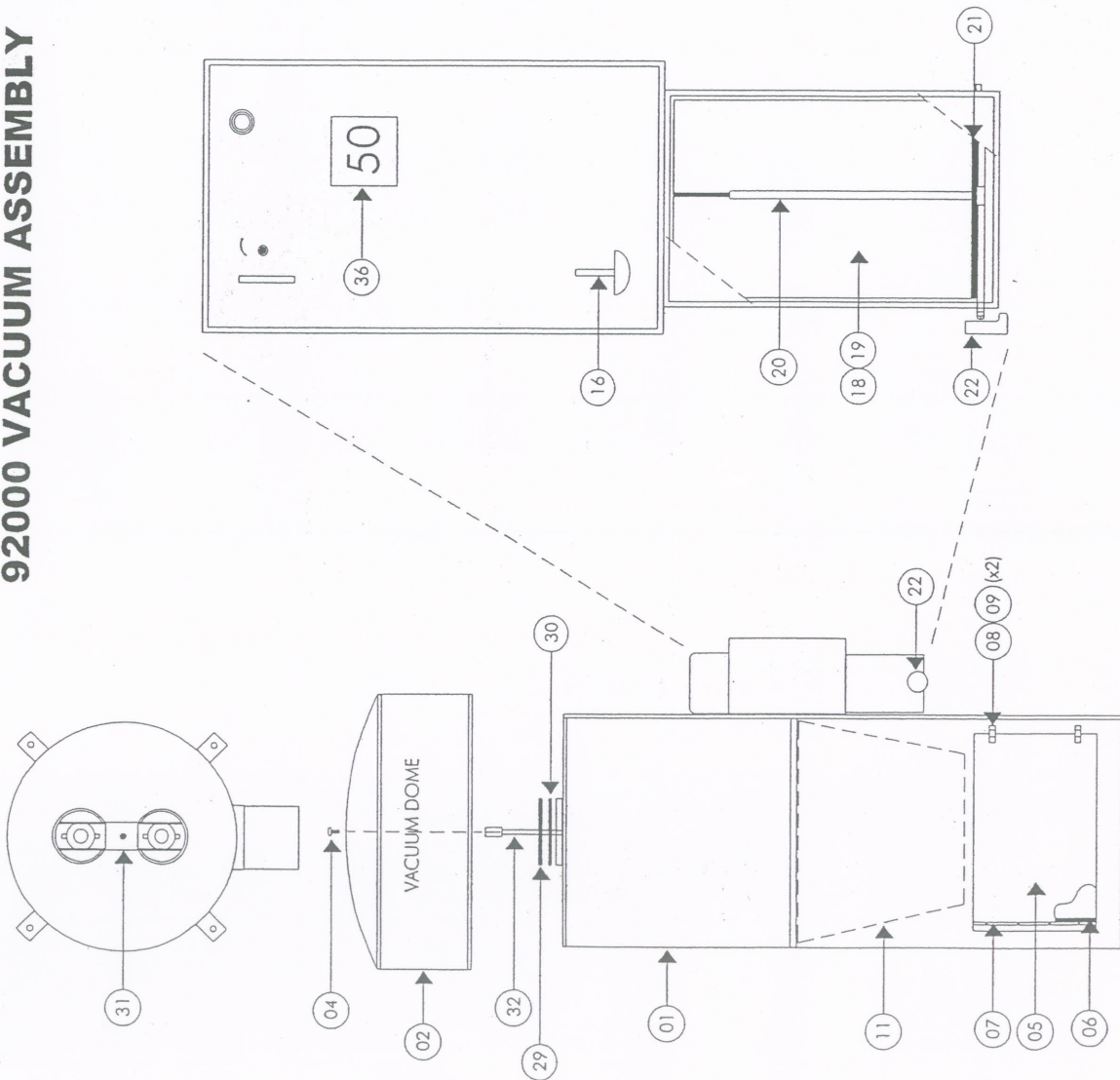
PARTS LIST

PAGE 1 OF 1

<u>ITEM</u>	<u>PART #</u>	<u>DESCRIPTION</u>
1	92104	CANISTER STAINLESS STEEL
2	92110	VACUUM DOME
3	38056	DOME DECAL
4	92112	TOP SCREW
5	92116	DOOR WITH HINGE
6	92120	DOOR GASKET
7	92124	DOOR SCREW & NUTS (4) **
8	92128	DOOR LATCH (2)
9	92132	DOOR LATCH SCREW & NUTS (2) **
10	92136	DOOR CATCH (2)
11	92140	VACUUM FILTER BAG
12	92142	VACUUM DIRT BAG **
14	92145	METER DOOR ONLY
15	26000	COIN MECHANISM
16	26022	COIN RETURN CUP & SCREW
17	24300	LOCK ASSEMBLY & KEY (2)
18	92152	COIN BOX WITH LOCK
19	92153	COIN BOX ONLY
20	24374	LOCK ASSY W/STUD & KEY
21	24382	LOCKING BAR SS MAX SEC
22	24390	LOCK AMERICAN #2000
23	82016	VACUUM TIMER 120V-VA3
24	92172	WIRING HARNESS (TIMER) **
25	92176	POWER CORD **
26	92180	MOTOR WIRING HARNESS **
27	72082	TEST SWITCH
29	92156	VACUUM MOTOR GASKET (2)
30	66036	SAFETY SCREEN (2)
31	92164	VACUUM MOTOR CLAMP
32	92168	VACUUM CLAMP BOLT ASSY
33	38052	HOSE HOOK DECAL **
34	92200	VACUUM HOSE DECAL **
35	92228	CROW FOOT CUFF 2"
36	38004	DOOR PRICE DECAL

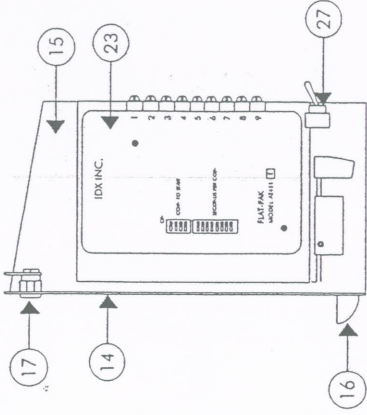
** DENOTES PARTS THAT ARE NOT ON THE PARTS BREAKDOWN.

92000 VACUUM ASSEMBLY



PARTS LIST

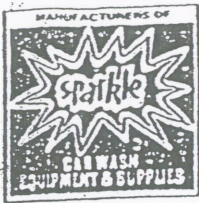
- 1 92104 CANISTER STAINLESS STEEL
- 2 92110 VACUUM DOME
- 4 92112 DOME TOP SCREW
- 5 92116 DOOR WITH HINGE
- 6 92120 DOOR GASKET
- 7 92124 DOOR SCREW & NUTS
- 8 92128 DOOR LATCH
- 9 92132 DOOR LATCH SCREW & NUTS
- 11 92140 VACUUM FILTER BAG
- 14 92145 METER DOOR ONLY
- 15 26000 COIN MECHANISM
- 16 26022 COIN RETURN CUP & SCREW
- 17 24300 LOCK ASSEMBLY & KEY
- 18 92152 COIN BOX WITH LOCK
- 19 92153 COIN BOX ONLY
- 20 24374 LOCK ASSY. WITH STUD & KEY
- 21 24382 LOCKING BAR SS MAX SEC
- 22 24390 LOCK AMERICA
- 23 82106 VACUUM TIMER
- 27 72082 TEST SWITCH
- 29 92156 VACUUM MOTOR GASKET
- 30 66036 SAFETY SCREEN
- 31 92164 VACUUM MOTOR CLAMP
- 32 92168 VACUUM CLAMP BOLT ASSY.



		JIM-COLEMAN-COMPANY 5413 W 24TH ST HOUSTON, TX 77055	
SHEET NAME: VACUUM BASE 92000		APPROVED BY:	
SCALE: 1/8" = 1"		DATE:	
DRAWING NO:		EQUIPMENT NO:	
DRAWING W/O:		FILE NAME:	
REVISIONS:		ENGINEER:	
CHANGES:		SHEET:	

World Class Manufacturing in Our Wash Equipment
 WWW.COLOWASH.COM

BASE92

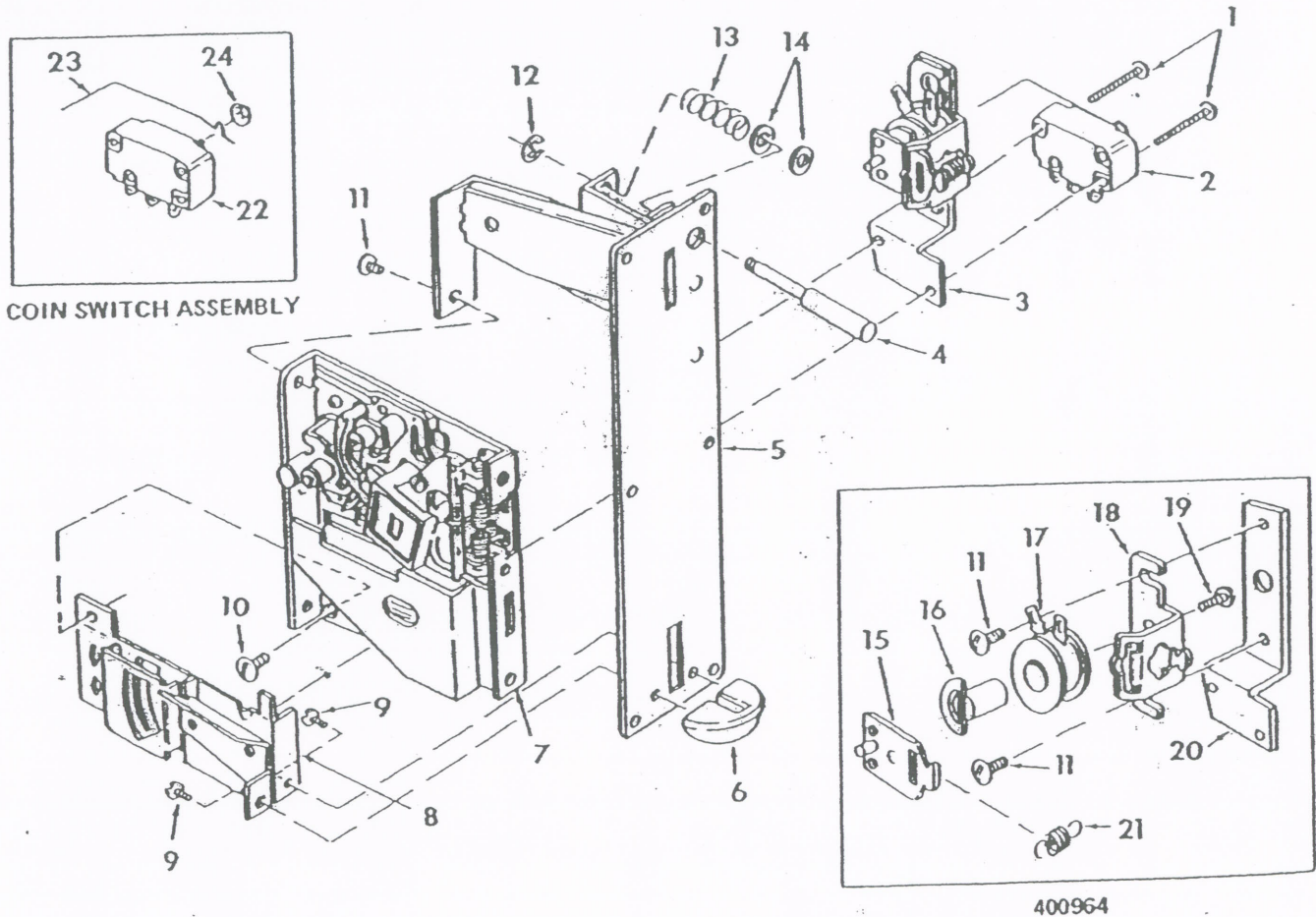


JIM COLEMAN COMPANY

CAR WASH SYSTEMS

"Total Systems Built Without Compromise"

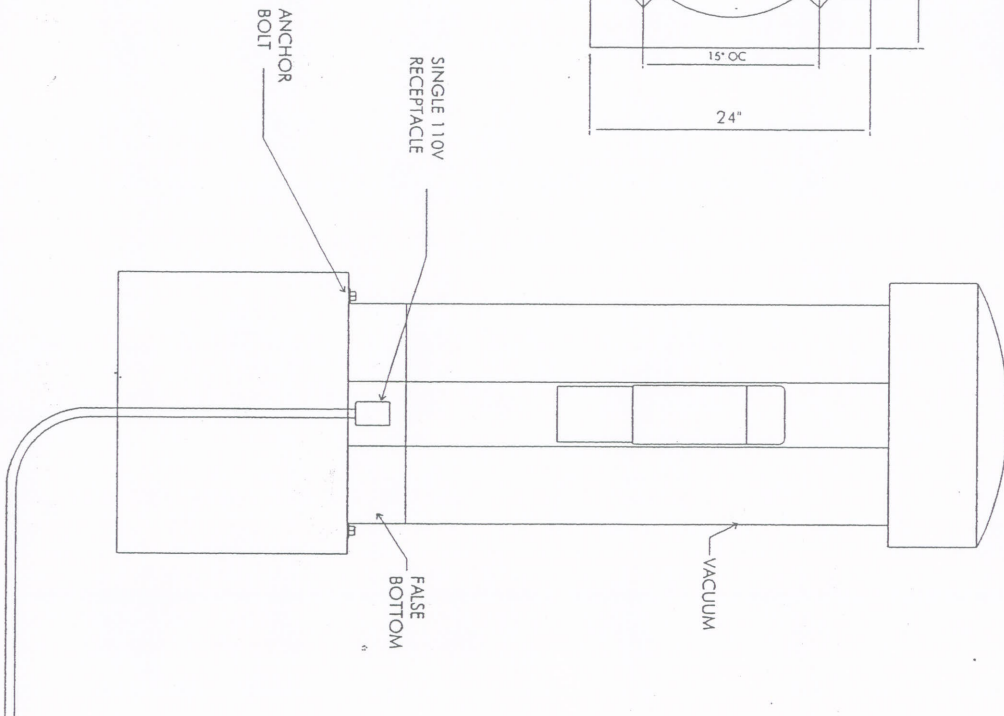
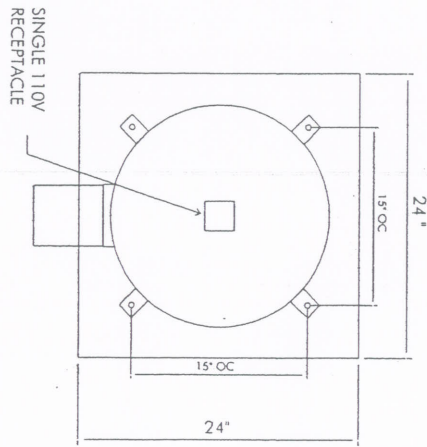
2600 SERIES SINGLE COIN FRONT PLATE FOR NICKEL, DIME OR QUARTER OPERATION



INDEX NO.	PART NO.	DESCRIPTION	QUANTITY	INDEX NO.	PART NO.	DESCRIPTION	QUANTITY
1	902056	Switch Screw	2	11	110-6-3	No. 6-32 x 3/16 Truss Hd. Screw	3
2	403676-1	5¢ Coin Switch & Wire Assembly	1	12	751-18	Retaining Ring	1
	403676-2	10¢ Coin Switch & Wire Assembly	1	13	902015	Plunger Return Spring	1
	403901	25¢ Coin Switch & Wire Assembly	1	14	902556	Plunger Spacer	2
3	400964	C.R.E.M. & Bracket Assembly	1	15	405151	Armature & Pin Assembly	1
4	901460	Coin Return Plunger	1	16	400635	Core & Ring Assembly	1
5	400962-1	5¢ Front Plate & Chute Assembly	1	17	900827	Electro-magnet Coil	1
	400962	10¢ Front Plate & Chute Assembly	1	18	900691	Electro-magnet Frame	1
	400962-2	25¢ Front Plate & Chute Assembly	1	19	108-B5-4	Brass Binding Hd. Screw	1
6	902977	Return Coin Catcher	1	20	901459	Electro-magnet Bracket	1
7	N510-0	5¢ Acceptor	1	21	900693	Electro-magnet Spring	1
	D520-0	10¢ Acceptor	1	22	900670-1	Switch	1
	Q530-0	25¢ Acceptor	1	23	902797-1	5¢ Coin Switch Wire	1
8	403976	Switch Bracket and Reject Chute Assembly	1		902797-2	10¢ Coin Switch Wire	1
9	345-4-8	No. 4 x 1/2 Pan Hd. Screw - Plastite	2		901489	25¢ Coin Switch Wire	1
10	110-8-3	No. 8-32 x 3/16 Truss Hd. Screw	1	24	900651	Switch Wire Retainer	1

92000 VACUUM BASE

BOLT PATTERN



OWNER:		JIM-COLEMAN-COMPANY			
SHEET NAME:		SHEET-NAME			
SCALE:	DATE:	DRAWN BY:	APPROVED BY:		
SCALE:	12-10-02	M.P.H.A.	E. COLEMAN		
DRAWING NO:	EQUIPMENT NO:	FILE NAME:	T:\B\OC\ELECTRICAL\VAC22-B-0292		
N/A	N/A				

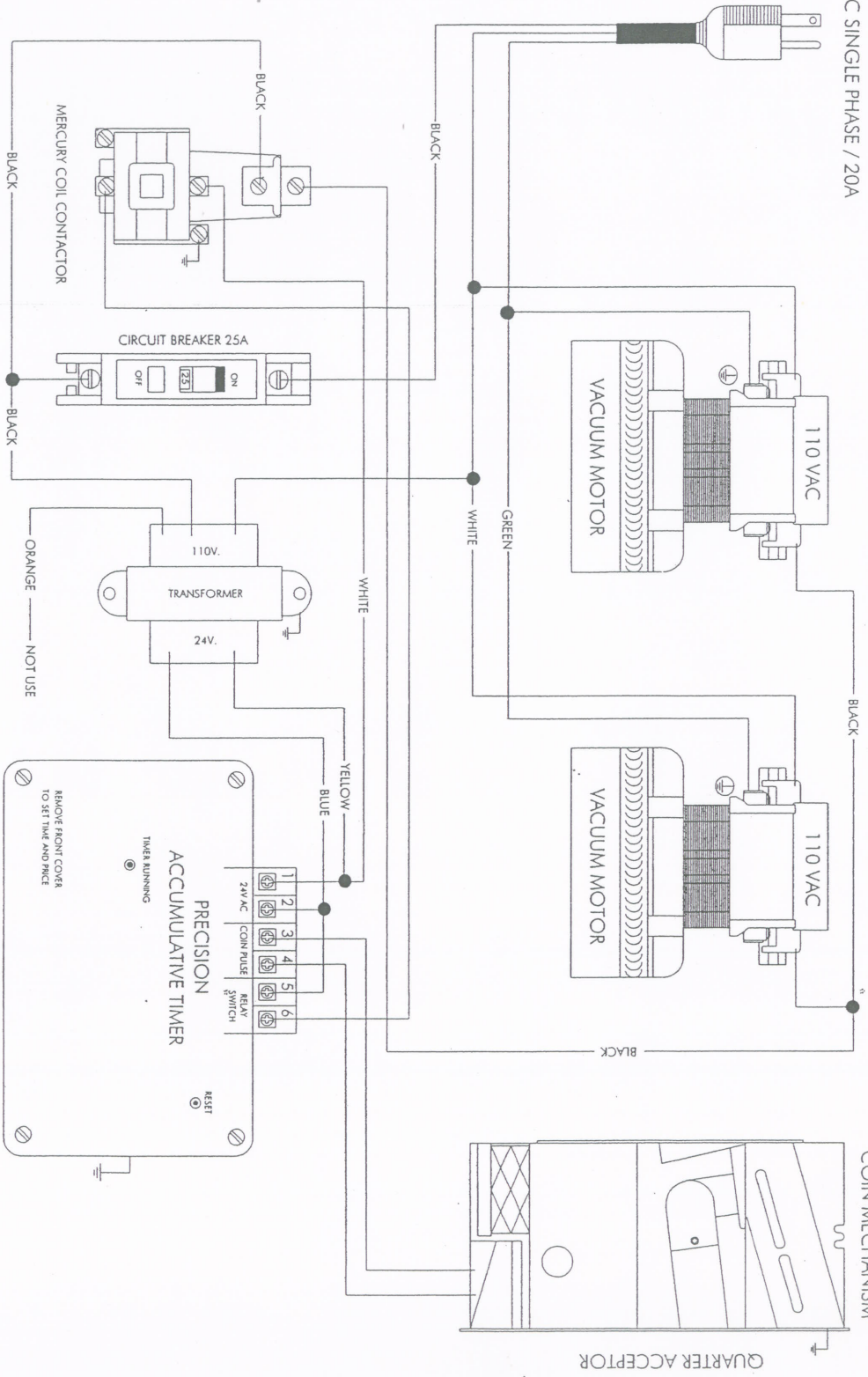


5412 WEST 24th STREET - HOUSTON, TEXAS
 PH 713-865-9833 - FAX 713-865-9434
 WEBSITE: WWW.COLEMANCO.COM

BASE92

92000 VACUUM WITH PRECISION CONTROL TIMER

110/120V AC SINGLE PHASE / 20A



OWNER:		JIM-COLEMAN-COMPANY	
SHEET NAME:		VACUUM 92000	
SCALE:	DATE:	DRAWN BY:	APPROVED BY:
AS SHOWN	10/13/02	RUPM	E.COLEMAN
DRAWING NO.:	EQUIPMENT A/C:	FILE NO.:	
N/A	N/A	N/A	


REVISIONS

REVISIONS

REQUIRE DATA ON APPROVAL

SHEET

VAC 92000



World Class Manufacturing in Car Wash Equipment

5842 WEST 34th STREET • HOUSTON, TEXAS
 TEL: 1-800-999-9978 • FAX: 713-443-9624
 WEBSITE: WWW.JIMCOLEMANCO.COM

1843 WEST 13TH STREET, HOUSTON, TEXAS
 TEL: (713) 866-8822 FAX: (713) 866-8823
 WWW.KCOLMANN.COM



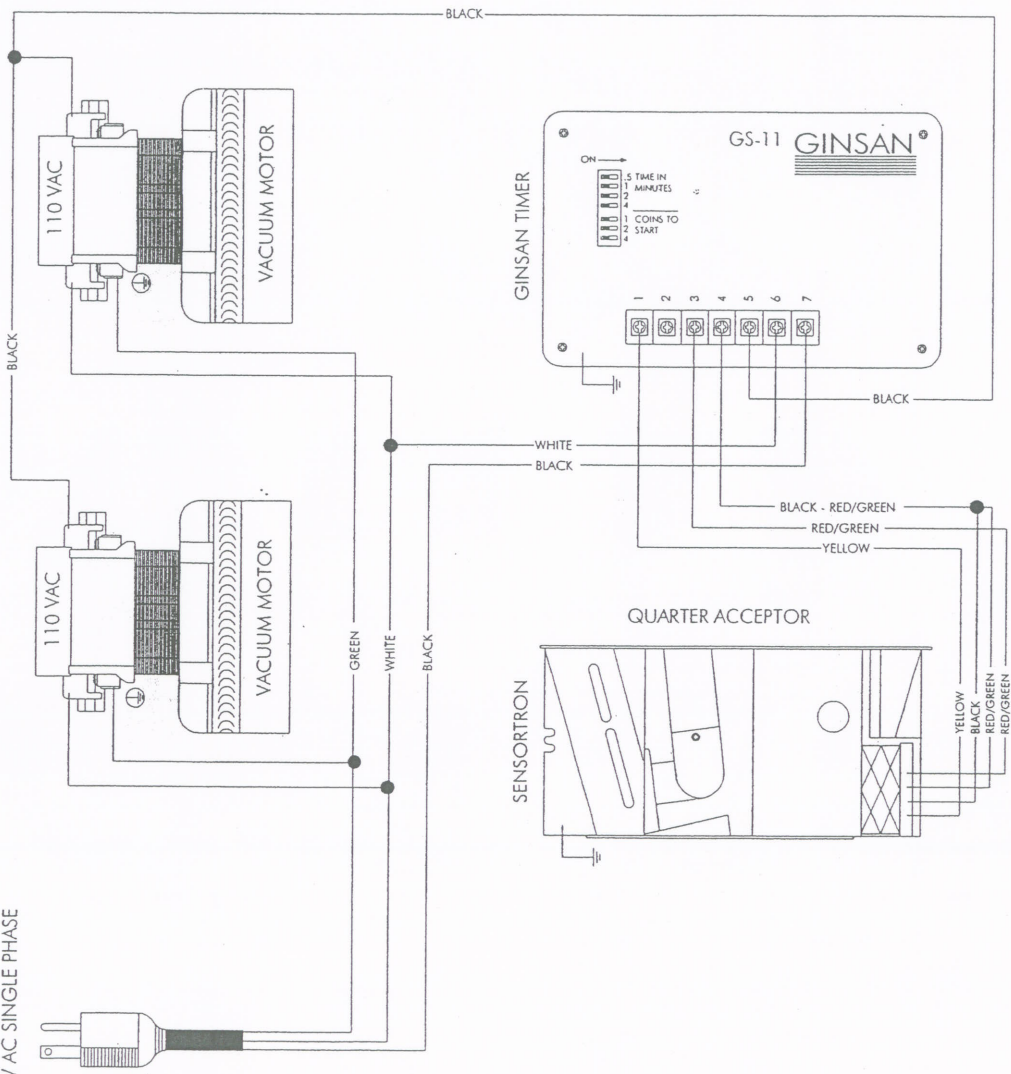
OWNER:	JIM-COLEMAN-COMPANY
DESIGNED BY:	SALES & SERVICE
DATE:	HOUSTON, TX 77058
SCALE:	AS SHOWN
DRAWING NO.:	VACUUM 92000 SCHEMATIC
EQUIPMENT NO.:	
FILE NAME:	2 BLOCKSHEETING\KCOLMANN\VC92000

ENGINEER:	SEN. OR APPROV.:
DATE:	
SCALE:	
DRAWING NO.:	
EQUIPMENT NO.:	
FILE NAME:	

SHEET:
VAC92000

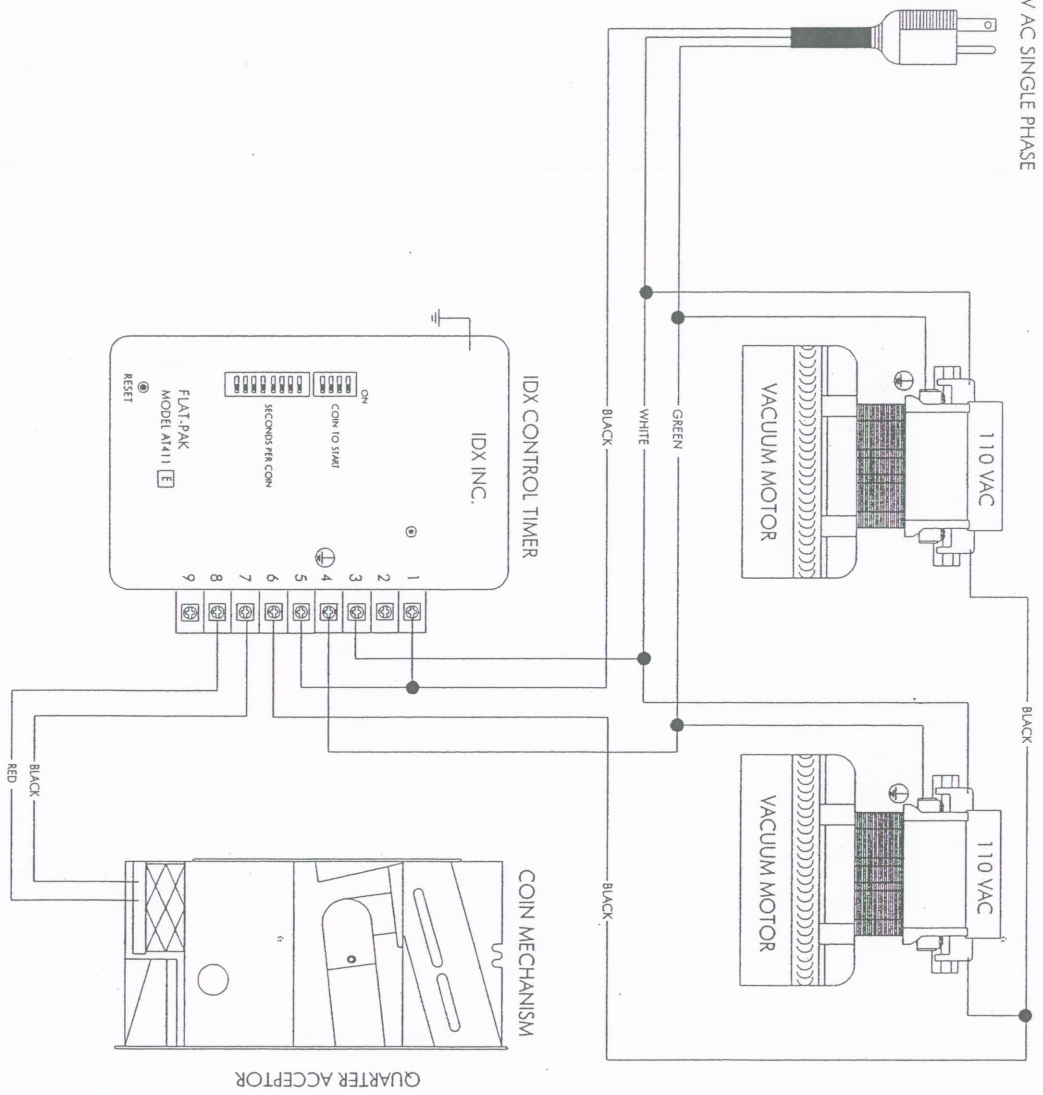
92000 VACUUM WITH GINSAN CONTROL TIMER & SENSORTRON.

110/120V AC SINGLE PHASE



92000 VACUUM WITH IDX CONTROL TIMER & COIN MECHANISM.

110/120V AC SINGLE PHASE



OWNER JIM-COLEMAN COMPANY 542 Wilson Houston, TX 77092		SHEET NAME VACUUM PHAM 92000	
SCALE AS SHOWN	DATE 10/14/02	DRAWN BY M. PHAM	APPROVED BY J. COLEMAN
DRAWING AFD N/A	EQUIPMENT AFD N/A	FILE NAME T:\MCC\REC\92000\VACUUM92000	
REVISIONS	ENGINEER: STAN COLEMAN		
SHEET			
VAC92000			

JIM COLEMAN COMPANY
World Class Manufacturing in Car Wash Equipment

3843 WEST 34th STREET HOUSTON, TEXAS
PH: 1-800-555-7473 FAX: 713-483-7624
WEBSITE: WWW.JIMCOLEMANCO.COM



Technical Data

072 Series

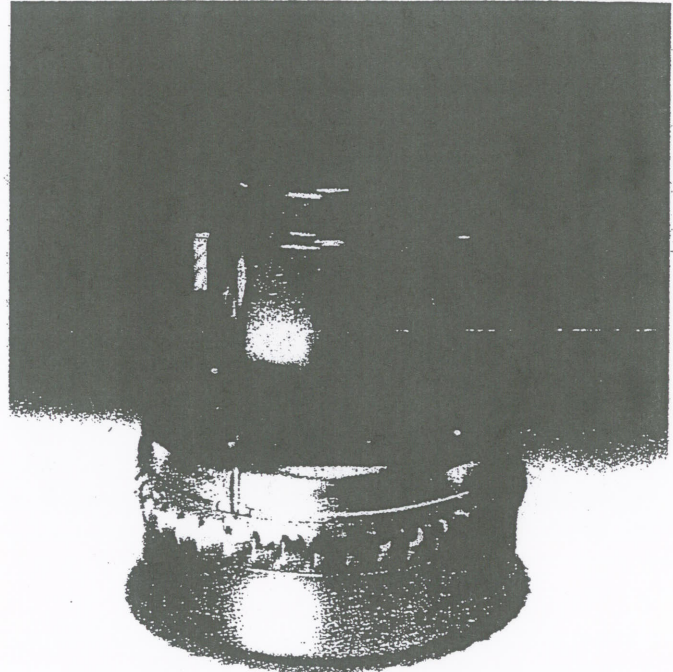
Two-Stage Peripheral Discharge Bypass Vacuum Motors

GS Electric's 072 Series motors are two-stage, single-speed bypass motors. Operating on 120 VAC, they feature a 5.7 inch diameter housing with either ball/ball or ball/sleeve bearing construction. The motors are designed for applications operating in environments which require the separation of working air from the motor ventilating air. A 240 VAC version is available in Model T72.

APPLICATIONS include commercial, utility, and central vacuum cleaning systems.

DESIGN FEATURES include UL component recognition and CSA construction certification, open frame construction, provision for grounding, and easy application to both new and existing cleaners. UL component recognized Models T072 and T172 provide locked rotor protection.

For special applications or modifications to standard motors, consult GS Electric.

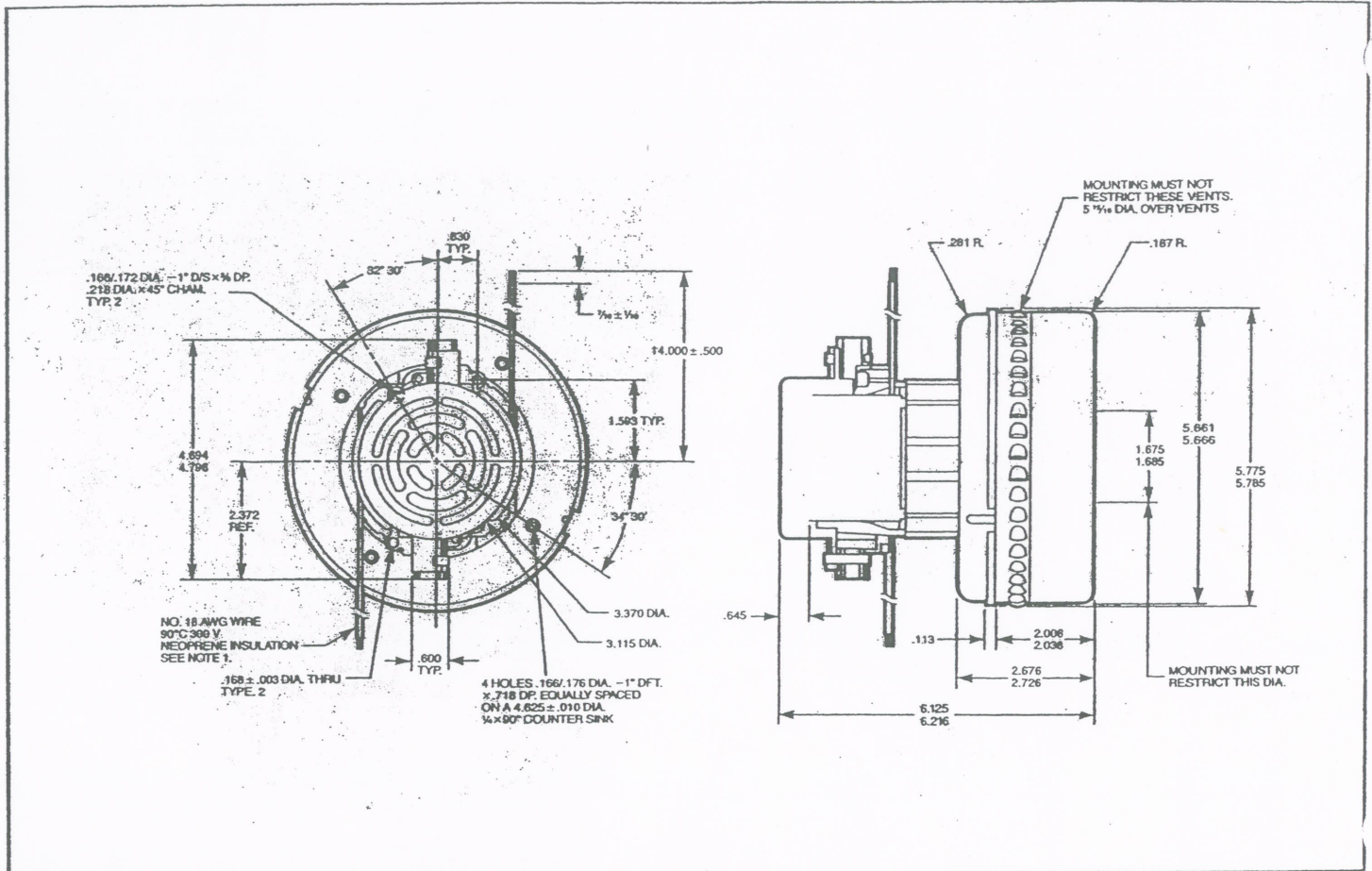


Vacuum-Airflow Performance

ORIFICE DIA. (IN.)	INPUT		RPM	PRESSURE		VOLUME CFM	OUTPUT AIR WATTS	OVERALL EFF. (%)
	AMPS	WATTS		WATER LIFT (IN.)	PSI			
2.000	8.95	1027	19,360	3.10	0.11	94.0	34.2	3.33
1.750	8.96	1028	19,290	5.03	0.18	91.7	54.2	5.27
1.500	8.99	1032	19,260	8.91	0.32	89.7	93.8	9.09
1.250	9.06	1041	19,210	16.23	0.58	84.0	160.1	15.38
1.125	9.07	1042	19,150	21.89	0.79	79.1	203.2	19.50
1.000	9.09	1045	19,150	29.46	1.06	72.5	250.6	23.98
.875	9.04	1039	19,220	38.49	1.38	63.4	286.7	27.59
.750	8.82	1017	19,470	47.41	1.71	51.7	287.5	28.27
.625	8.42	974	19,940	54.91	1.97	38.7	249.3	25.59
.500	7.79	908	20,640	63.27	2.28	26.6	197.2	21.72
.375	7.19	839	21,530	71.03	2.55	15.9	132.3	15.76
.250	6.59	771	22,280	78.09	2.81	7.3	67.1	8.70
Sealed Motor	6.04	714	23,120	87.42				

Published data is for reference only; consult GS Electric for latest options and specifications. Performance characteristics represent test data at 120 VAC, 60 Hz. Airflow data is corrected to standard barometer (29.92 Hg) and temperature (68 F).

Outline Dimensions



Published data is for general reference only. GS Electric retains the right to modify product without notice.

The Full Line of GS Electric Motors Includes:

B-Pak® Motors

Packaged 243 frame enclosed motors that have become industry's power of choice through application flexibility. Feature various mounting configurations and performance and shaft modifications. Available in designs from 100V to 255V AC. UL and CSA recognized. Options include bearing construction, inherent overheating protection, airflow direction and grounding.

Permanent Magnet Motors

A wide selection of two-pole DC motors available in open or enclosed construction. Feature 25 to 80 oz./in. continuous torque in 3-inch diameters, ball or sleeve bearing design, and voltages from 6V to 255V DC. UL recognized. Options include a packaged rectifier and inherent overheating protection.

Skeleton Motors and Part Sets

Available in 243, 287 and 318 frame in multi-speed and reversible designs in 100V to 255V AC. Performance and shaft modifications available as required. UL recognized.

Motor Blowers

Thru-flow, peripheral by-pass and tangential discharge types in designs from 36V to 255V AC. High performance and high efficiency models available. Single and two-stage designs, with an economical three-stage design available in tangential discharge type. UL and CSA recognized. Options include bearing type, inherent overheating protection, long-life brushes and patented bearing air seal on tangential discharge models.

P.O. Box 400
1700 Ritner Highway
Carlisle, PA 17013

A UNIT OF GENERAL SIGNAL

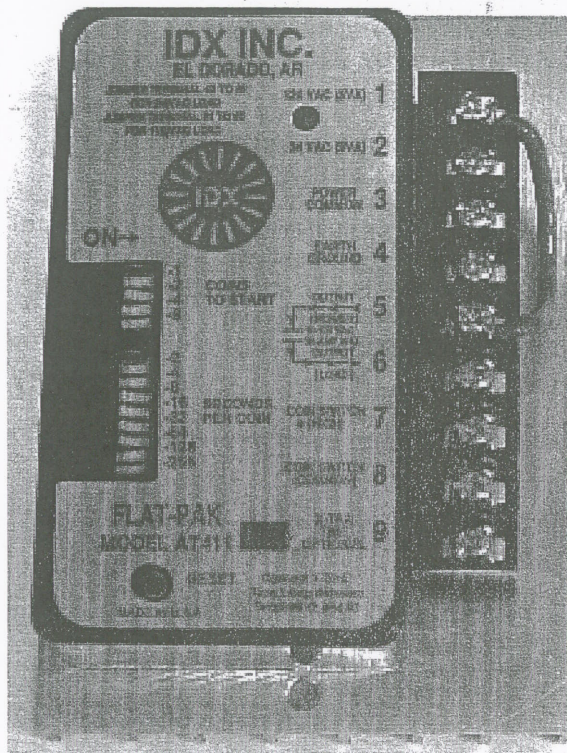
GS ELECTRIC

717-243-4041
Telex 510-650-2284
FAX 717-243-6519

Models AT411E-L-X

ACCUMULATING TIMER

FOR VACUUMS AND BAYS



The IDX AT411E series of accumulating timers can be used in vacuums or bays. This series of timers can operate either on 120VAC or 24VAC and switch out either voltage. Operators can field adjust time and or coins to start.

The Model AT411E-L has an Aux. Output that turns on the last 32 seconds of time. This continuous 20mA max. output will operate a horn or lamp that is the same voltage as the load.

The Model AT411E-X "X-Tra Time" allows your customer to complete his desired vacuum or wash cycle. At the end of the cycle, an output turns on. Now the customer has 20 seconds to deposit one or more coins to continue. This 20mA max. output will operate a horn or lamp that is the same voltage as the load.

If no coins are deposited before the "X-Tra Time" period expires, the AT411E-X timer resets and the defined number of coins to start must be deposited, which starts a new cycle.

FEATURES

- OPERATE WITH 120VAC or 24VAC POWER
- TWO (2) HEAVY DUTY 25 AMP SCR OUTPUTS
- 1 TO 15 COINS TO START
- ACCEPTS 256 COIN INPUTS WITHOUT RESETTING
- SELECT COIN TIME FROM 2 SECOND TO 8.5 MINUTES PER COIN

OPTIONAL MODELS

- AT411E-L: LAST COIN ALERT STARTS AT THE LAST 32 SECONDS
- AT411E-X: "X-Tra Time" 20 SECONDS CONTINUATION TO ADD 1 or MORE COIN TO START TIMER AGAIN
- AT411E-N: TIMER DOES NOT RESET WHEN COIN INPUT IS HELD (USED WITH COIN SLIDES)
- AT411E-R: REMOTE RESET
- AT411E-1: NON-ACCUMULATING BEYOND PRESET COIN INPUT

Mailing: 401 W. Main St., El Dorado AR 71730 - Shipping: 400 W. Cedar St., El Dorado AR 71730
Phone: 800-643-1109, 870-862-2051 FAX: 870-862-3472 E-Mail: sales@idxinc.com Web: www.idxinc.com

AT411 WIRING

SWITCH SETTINGS

COINS TO START

ON 

1
2
4
8

TO SET THE NUMBER OF COINS TO START, PUSH COIN SWITCHES TO THE RIGHT. TO ADD UP TOTAL NUMBER OF COINS NEEDED TO START. EXAMPLE: 5 COINS TO START. PUSH TO THE RIGHT THE #1 SWITCH AND #4 SWITCH FOR A TOTAL OF 5 COINS TO START.

SECONDS PER COIN

ON 

2
4
8
16
32
64
128
256

AT411E IS AN ACCUMULATING TIMER. TO SET TIME, DIVIDE TOTAL TIME BY THE TOTAL NUMBER OF COINS TO START. PUSH THE CORRECT SWITCHES TO THE RIGHT. EXAMPLE: \$1.25 TO START FOR 4 MINUTES. 5 COINS DIVIDED INTO 240 SECONDS (4 MIN.) EQUALS 48 SECONDS PER COIN. PUSH TO THE RIGHT THE #16 SECOND SWITCH AND THE #32 SECOND SWITCH FOR A TOTAL OF 48 SECONDS PER COIN.

AT411 TIMER CONNECTIONS

JUMPER TERMINAL #1 TO #5 FOR 120VAC LOAD
#2 TO #5 FOR 24VAC LOAD

TERMINAL #1	120VAC POWER IN
TERMINAL #2	24VAC POWER IN
TERMINAL #3	POWER COMMON
TERMINAL #4	EARTH GROUND
TERMINAL #5	INPUT FOR OUTPUT POWER
TERMINAL #6	OUTPUT LOAD 25A, 24/120VAC
TERMINAL #7	COIN SWITCH WIRE (RED/GREEN OR BLUE)
TERMINAL #8	XEPTOR® COMMON WIRE (BLACK AND/OR RED/GREEN)
TERMINAL #9	X-Tra Time LAMP - LAST COIN LAMP OR HORN

CONNECT 24VAC LAMP OR HORN BETWEEN
TERMINAL #9 & #2 (MAX OUTPUT 20mA)

CONNECT 120VAC LAMP OR HORN BETWEEN
TERMINAL #9 & #1 (MAX OUTPUT 20mA)

CONNECT LOAD BETWEEN TERMINAL #6 AND
POWER COMMON TERMINAL #3

AT411 OPTIONS

-X = X-Tra Time
-L = LAST COIN ALERT
-N = NON-RESETTABLE BY COIN INPUT
-R = REMOTE RESET
-1 = NON-ACCUMULATINGRE COIN ACCEPTORS

FOR 24VAC OPERATION ACCEPTOR CONNECTIONS

3 WIRE COIN ACCEPTORS
MA711 / MA611 / X10AW / ETC.

ACCEPTOR	AT411
YELLOW WIRE	TERMINAL #2
BLACK WIRE	TERMINAL #8 OR #3
BLUE WIRE	TERMINAL #7

4 WIRE COIN ACCEPTORS
MA601 / MA800 / X10CR / ETC.

ACCEPTOR	AT411
YELLOW WIRE	TERMINAL #2
BLACK WIRE	TERMINAL #8 OR #3
RED/GREEN WIRE	TERMINAL #8 OR #3
RED/GREEN WIRE	TERMINAL #7

LIMITED WARRANTY

The Manufacturer warrants any component or part of the Coleman Hanna Car Wash Systems LLC equipment to be free from defects in material and workmanship for a period of one year from date of shipment, with the exception of such parts as are commonly recognized to be subject to wear in normal usage, such as high pressure hoses, swivels, nozzles, safety shut off guns, etc., which are warranted for ninety (90) days. All electrical parts not manufactured by Jim Coleman Company are warranted to be free from defects in material and workmanship for a period of 90 days. Electrical motors shall be covered under manufacturer's warranty for a period of one year, unless otherwise specified. Jim Coleman Company electronic controls, such as timers, coin acceptors and computer monitoring equipment, carry a one-year warranty. Claims under this warranty must be asserted in writing within the one-year period covered by this warranty.

Any component or part alleged to be defective in material or workmanship shall, at option of Manufacturer, be returned with shipping cost prepaid. If, upon examination, such component or part is found to be defective in workmanship or materials, Manufacturer, at its option, will either repair or replace such component or part, and shall ship such repaired or replaced component or parts F.O.B. factory, Houston, Texas. Manufacturer reserves the right to use "Like New" or Remanufactured parts in repair of warranty items that exceed 6 months in service. The cost of such replacement or repair shall be the exclusive remedy for any breach of any warranty and Manufacturer shall not be liable to any person for consequential damages for injury or commercial loss resulting from any breach of any warranty. This warrant does not cover any labor installation cost, either with respect to the original equipment, the repaired or replaced component, or part defective in workmanship or materials. Coleman Hanna Car Wash Systems LLC does not warrant loss of income should there be any during such time repairs are being made. Coleman Hanna Car Wash Systems LLC shall not be responsible for vehicle damage or repairs as may arise during normal wash cycle operation. Operator acknowledges accepted risks involved with friction in-bay automatic washes.

This warranty does not apply to components or parts which have been misused, altered, neglected, not installed, adjusted, maintained, or used in accordance with applicable codes and ordinances and in accordance with Manufacturer's recommendations as to such factors.

THIS WARRANTY IS IN LIEU OF ALL WARRANTIES, EXPRESS OR IMPLIED, OF EITHER MANUFACTURER OR SELLER, AND MANUFACTURER MAKES NO WARRANTY AGAINST INFRINGEMENT OF THE LIKE, MAKES NO WARRANTY OF MERCHANTABILITY, MAKES NO WARRANTY OF FITNESS FOR A PARTICULAR PURPOSE, AND MAKES NO OTHER WARRANTY, EXPRESS OR IMPLIED, INCLUDING IMPLIED WARRANTY ARISING FROM COURSE OF DEALING OR USAGE OF TRADE.

This warranty does not apply to damage resulting from improper operation or abuse, exceeding the rated capacities of the unit, running foreign particles or non related solutions through pumps or valves, using acidic solutions, improper installation or maintenance, operational neglect, neglect of manufacturers recommended maintenance, use of water containing solids in excess of twenty microns in diameter or 2000 PPM, damage caused by customer, unjustifiable nuisance calls, or acts of God.

Compliance with any local governmental laws or regulations relating to the location, use or operation of the equipment, or its use in conjunction with other equipment, shall be the responsibility of the purchaser. The rights and obligations of the parties shall be governed by the State of Texas.