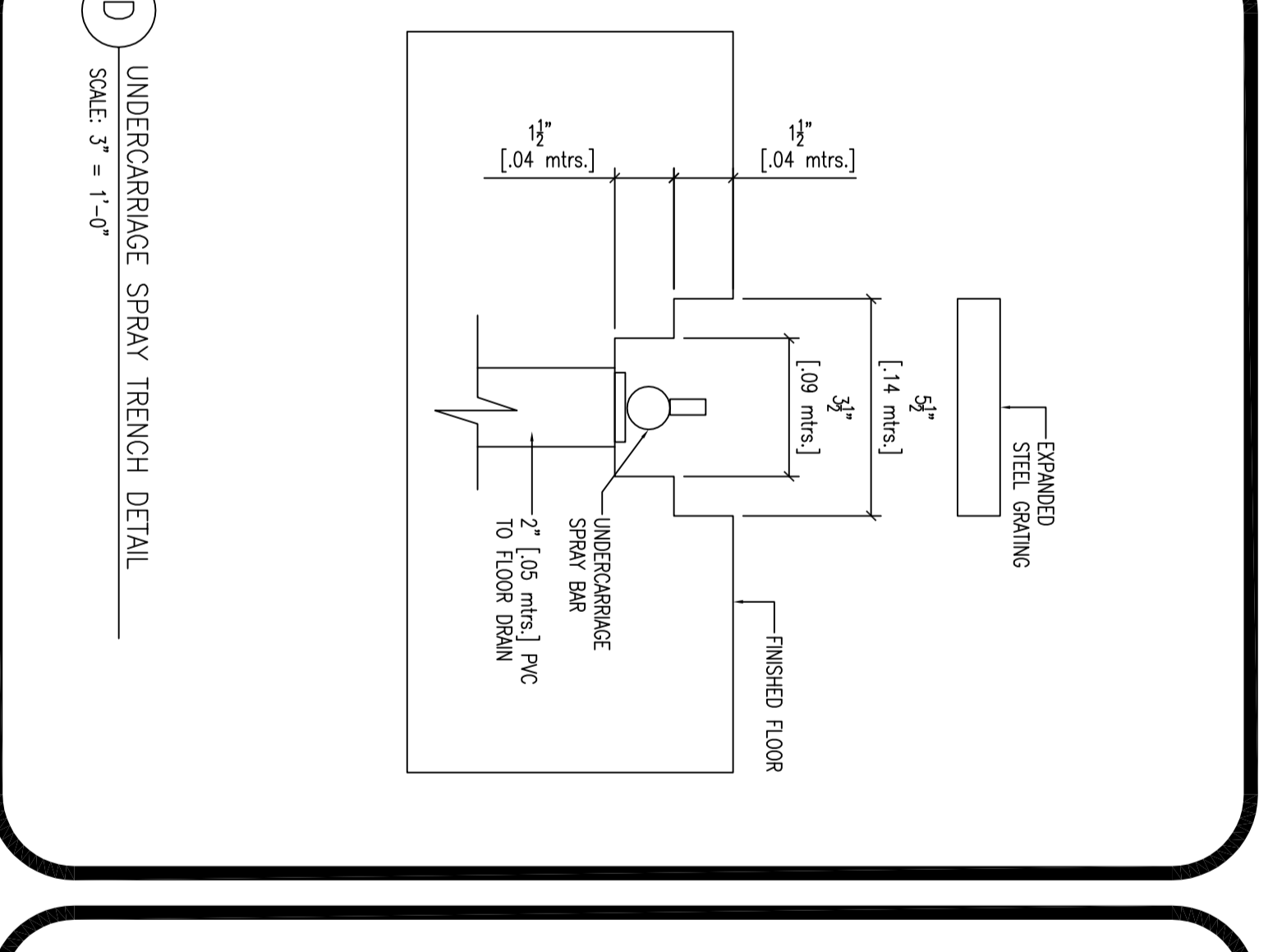
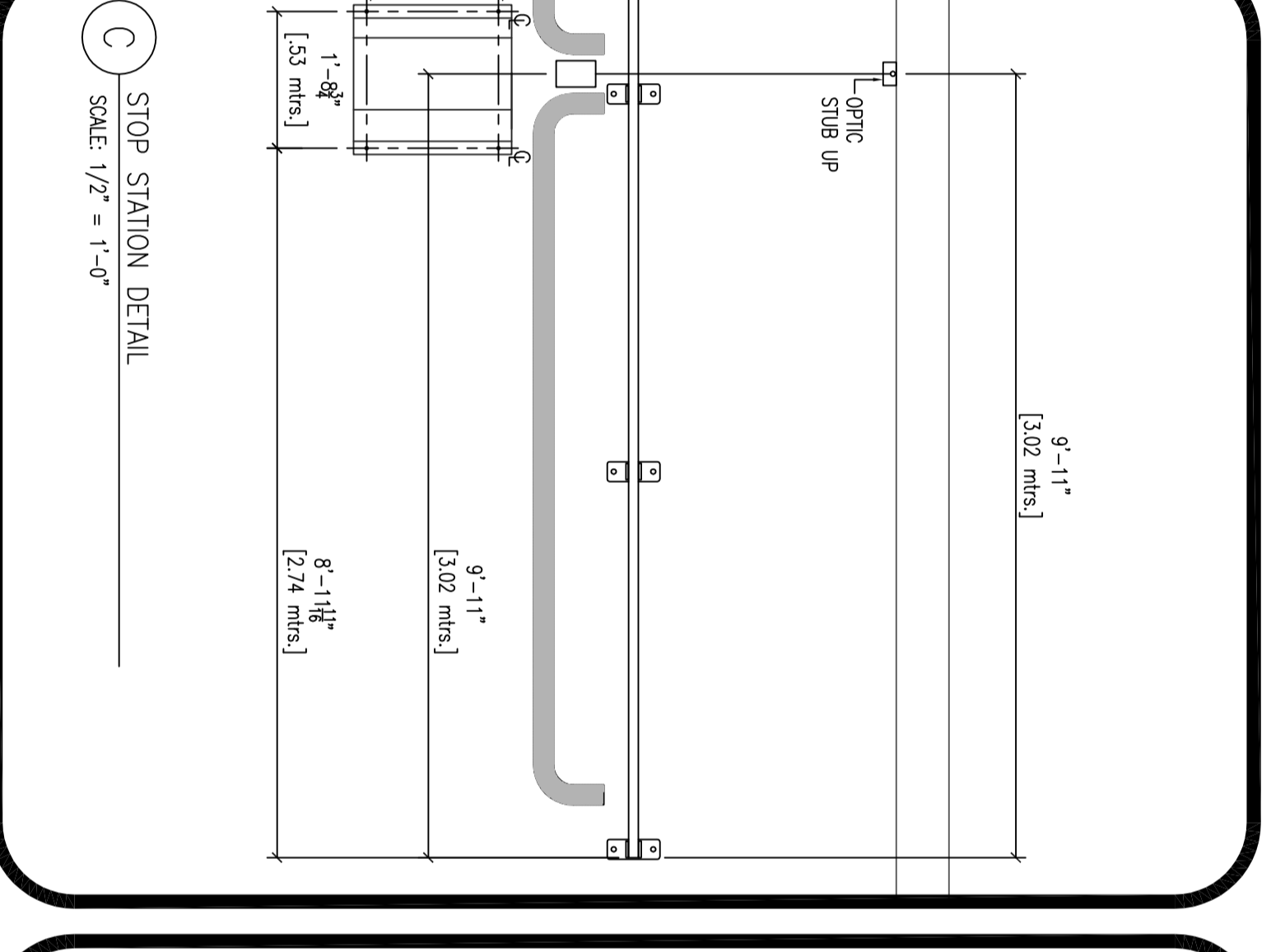
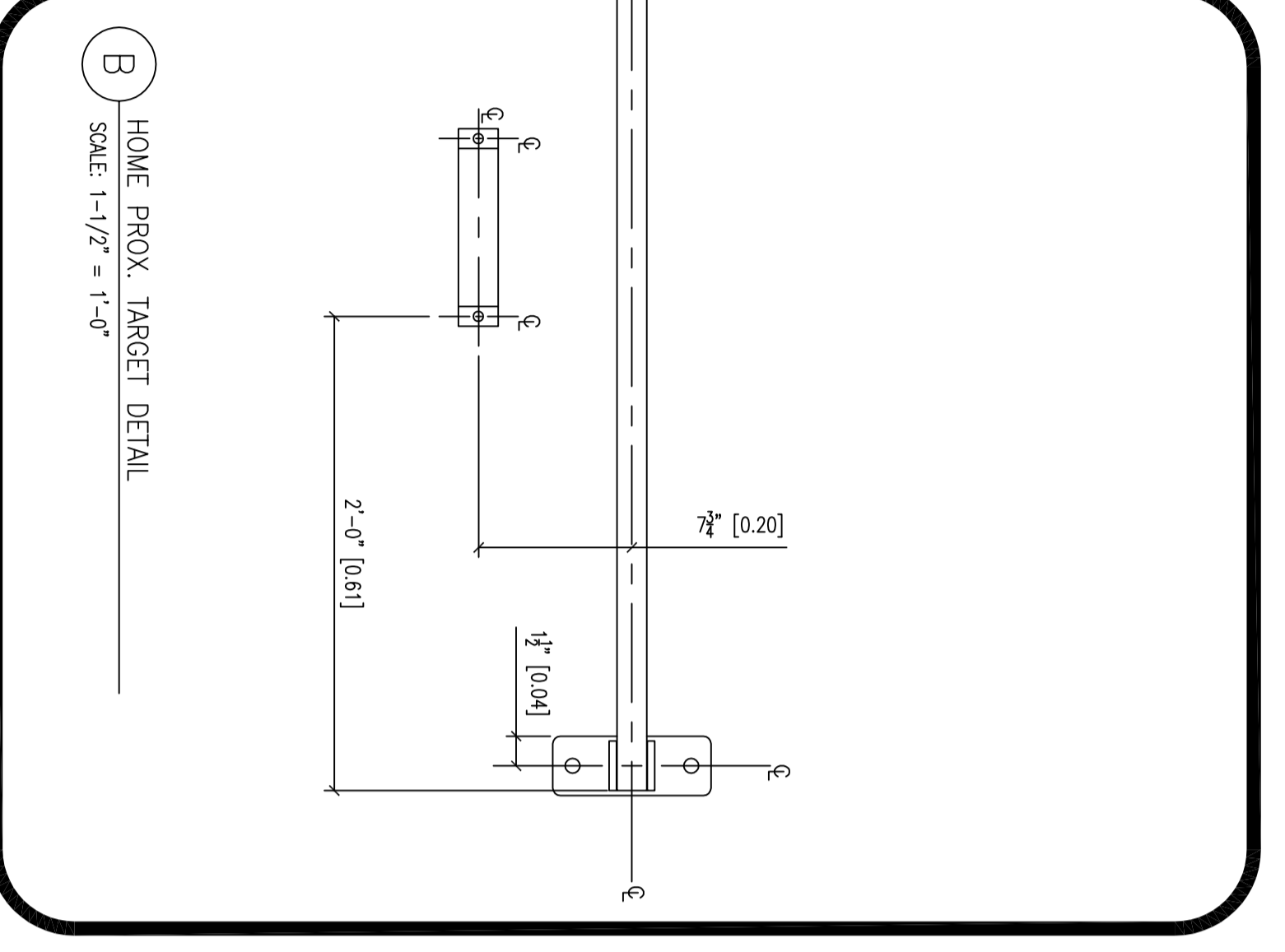
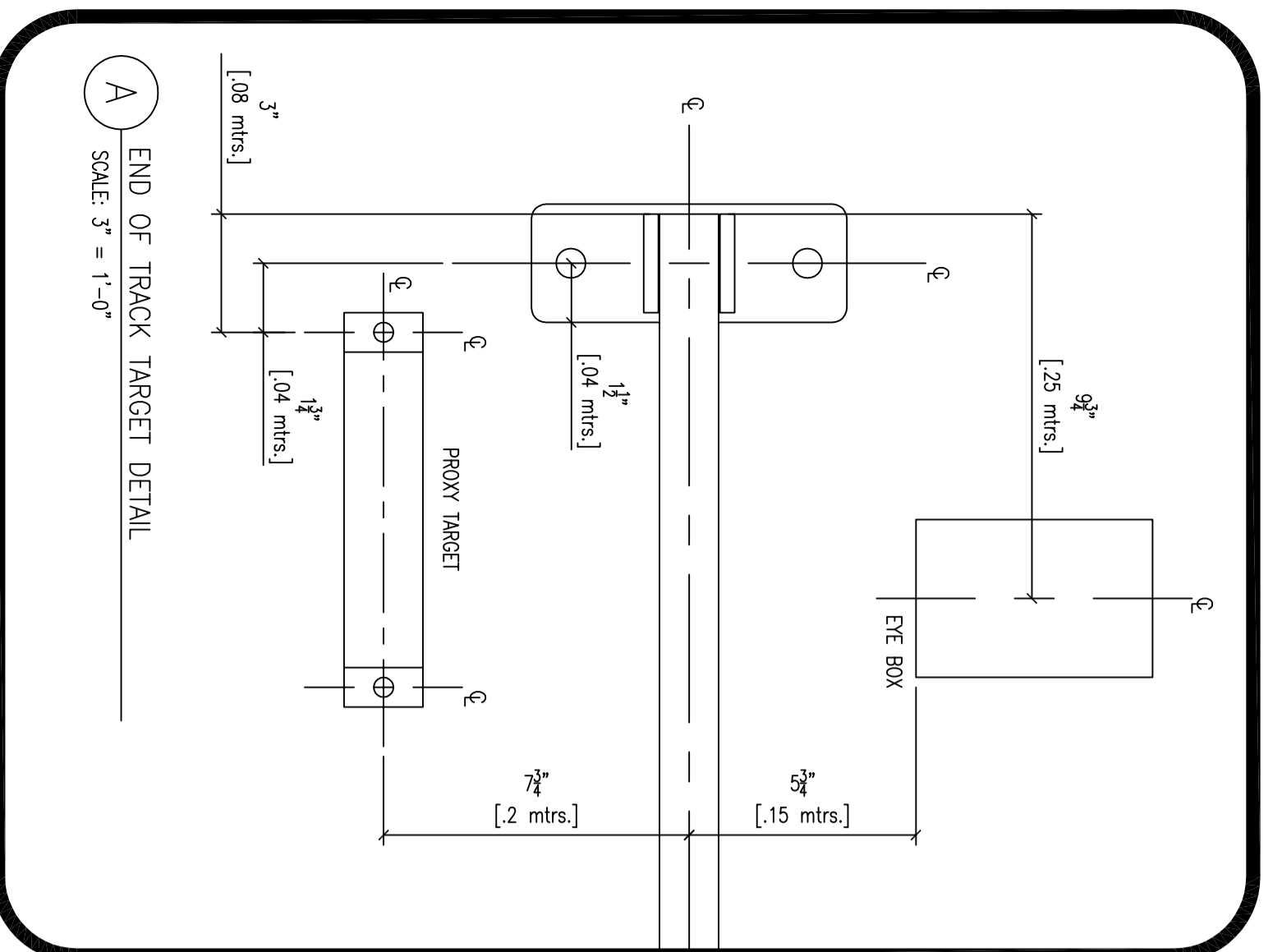


1 FUSION-X (PLAN VIEW)  
SCALE: 3/8" = 1'-0"



**NOTE: PLEASE DO NOT SCALE DRAWING CONTACT JCC FOR ANY DISCREPANCIES 1-800-999-9878.**

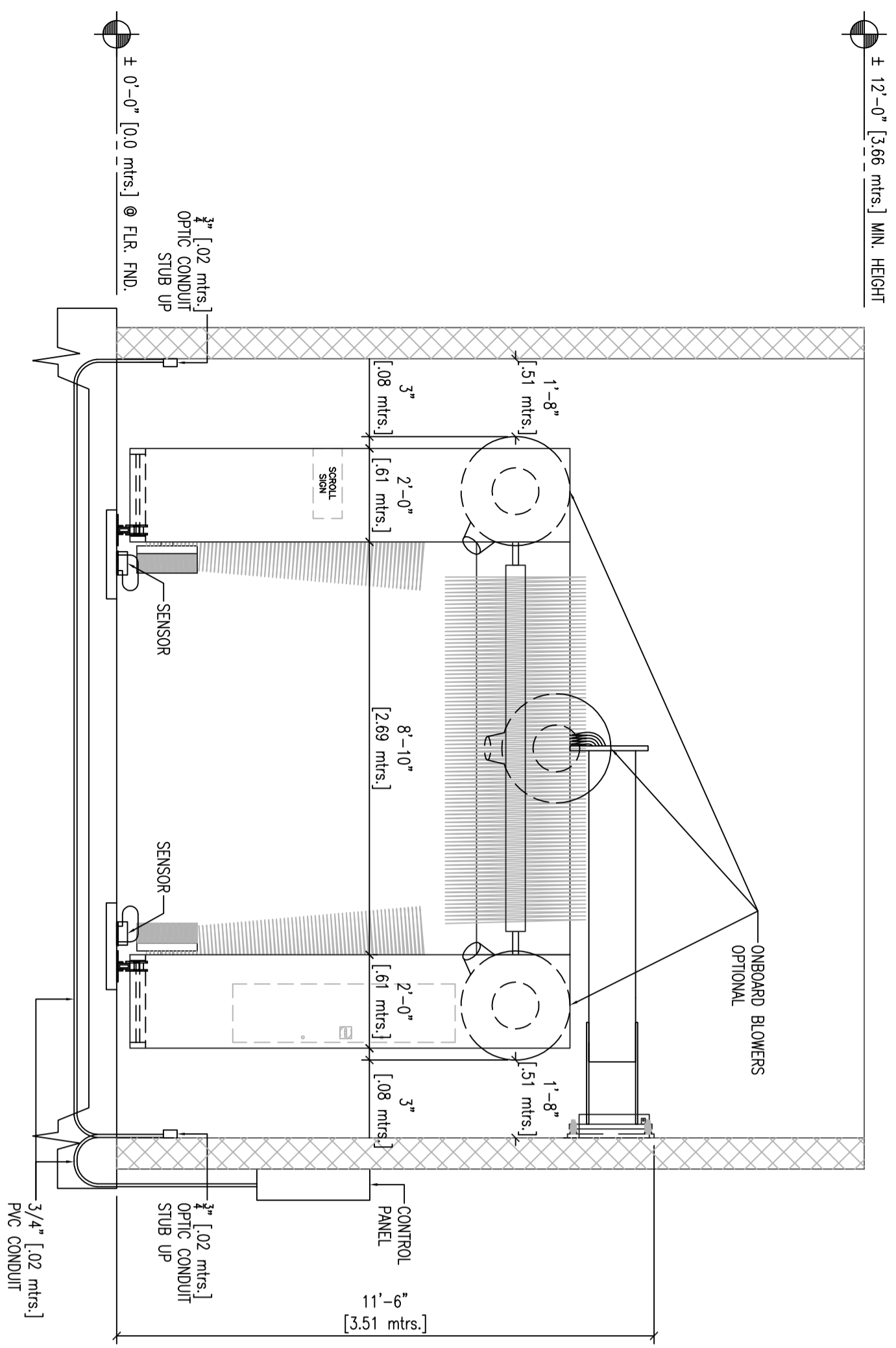
- Electrician**  
1) When requested, JCC will provide the operator site drawing for the proper placement of JCC supplied equipment. This will be done in a timely manner for both the equipment room and the wash bay once the site questionnaire has been received.
- Plumber**  
1) If the site includes a floor heat system, the operator is responsible to install in-floor tubing so as to avoid the area of the floor directly beneath the drive rail and gentry track as specified on the F.M.I. 0 drawing or a site specific drawing as mentioned in item # 1. JCC quotes do not include installation of floor heat tubing unless otherwise specified.
- 2) Operator is responsible for the mounting and installation of the entrance controller unless otherwise specified.
- 3) Local electrical will run all wires to the wash bay excluding cables installed in the wash gentry floor. JCC distributor installers will make final termination of low voltage cables.
- 4) Operator is responsible for all incoming electrical from the main panel to the JCC equipment disconnect switch or other termination points. This includes breakers and/or fused disconnects.
- Plumber**  
1) Install all plumbing as needed from the main supply to all equipment as specified. This includes softeners, boilers, RO systems, etc... up stream of the pumping equipment.
- 2) Install all air lines as specified.

OWNER: <b>JIM COLEMAN COMPANY</b> 5842 WEST 34th STREET HOUSTON, TX 77092			
SHEET NAME: <b>FUSION-X (MECHANICAL LAYOUT)</b>			
SCALE: AS SHOWN	DATE: 01/16/2012	DRAWN BY: JTRVINO	APPROVED BY: J.TRUELOVE / R. WITTE
DRAWING A.K.O.:	EQUIPMENT A.K.O.:	FILE NAME: T:\W-FUSIONX\Fx-M1.0.dwg	

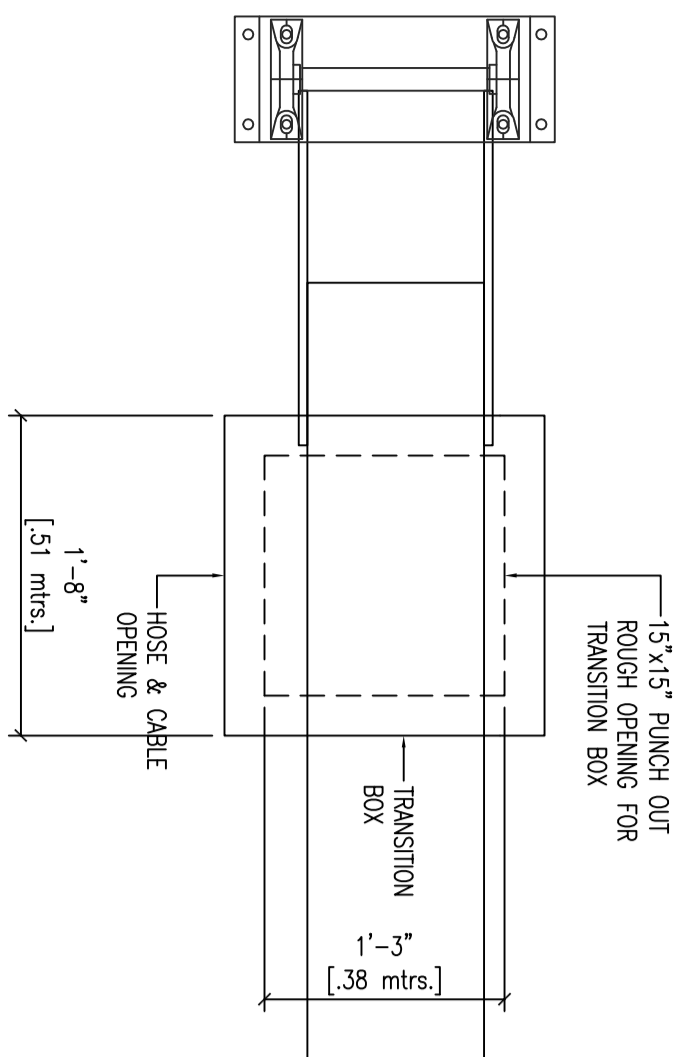
**World Class Manufacturing in Car Wash Equipment**

HOME OFFICE: 5842 WEST 34th STREET  
HOUSTON, TEXAS 77092  
PH: 1-800-999-9878 FAX: 713-663-8624  
www.jcolemanco.com

SHEET:	ENGINEER SEAL OR APPROVAL:
<b>Fx-M1.0</b>	



1 FUSION-X (FRONT VIEW)  
SCALE: 3/8" = 1'-0"

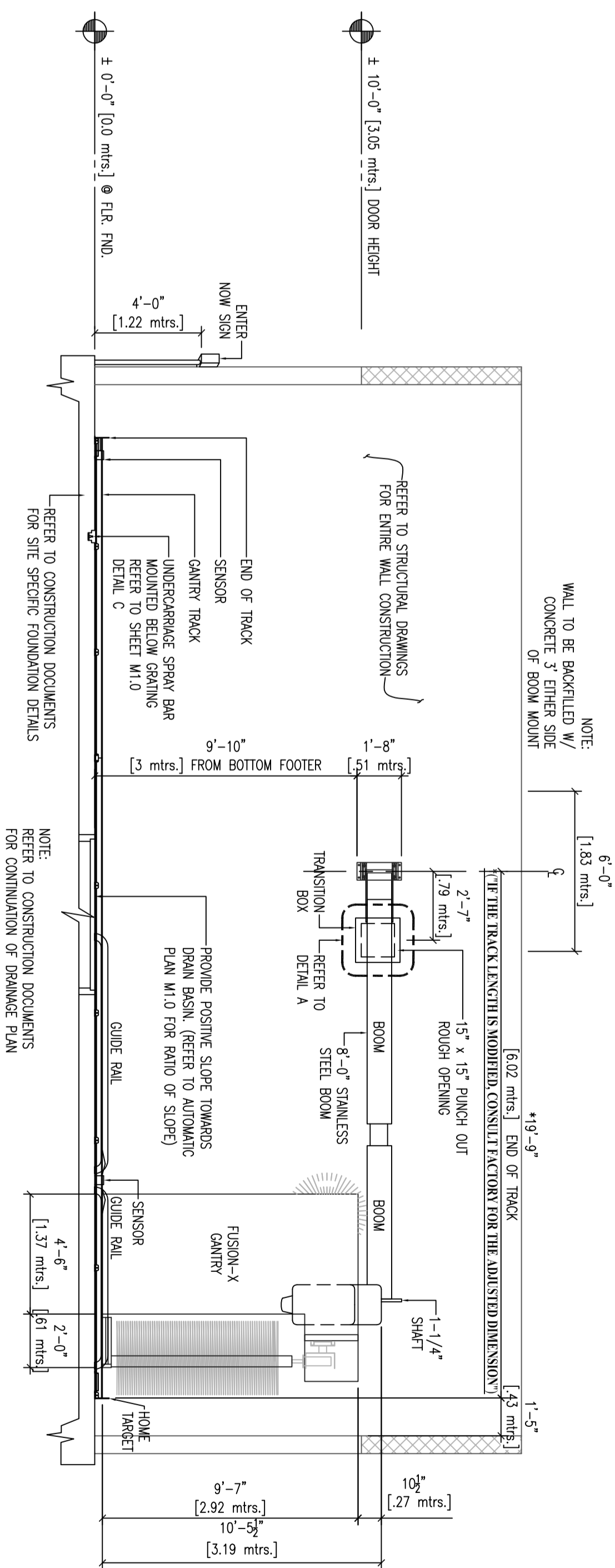


A FUSION-X (FRONT VIEW)  
SCALE: 1" = 1'-0"

B NOT USED  
SCALE: N.T.S.

C NOT USED  
SCALE: N.T.S.

D NOT USED  
SCALE: N.T.S.



2 FUSION-X (SIDE VIEW)  
SCALE: 3/8" = 1'-0"

NOTE:  
ALL ELEVATION DIMENSIONS ARE FROM  
BOTTOM OF GANTRY TRACK MOUNTING  
FOOT.

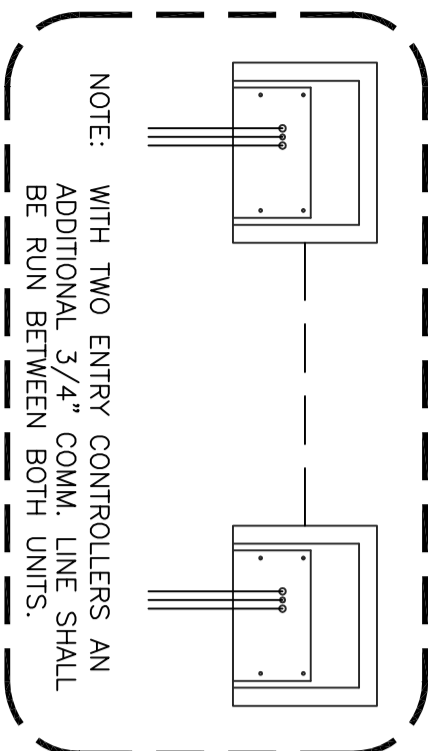
NOTE: PLEASE DO NOT SCALE DRAWING  
CONTACT JCC FOR ANY DISCREPANCIES  
1-800-999-9878.

OWNER: <b>JIM COLEMAN COMPANY</b> 5842 WEST 34th STREET HOUSTON, TX 77092			
SHEET NAME: <b>FUSION-X ELEVATIONS &amp; DETAILS</b>			
SCALE: AS SHOWN	DATE: 01/16/2012	DRAWN BY: JTRVINO	APPROVED BY: J. TRUELOVE / R. WITTE
DRAWING ACO:	EQUIPMENT ACO:	FILE NAME: T:\W-FUSION\X\FX-M1.A	

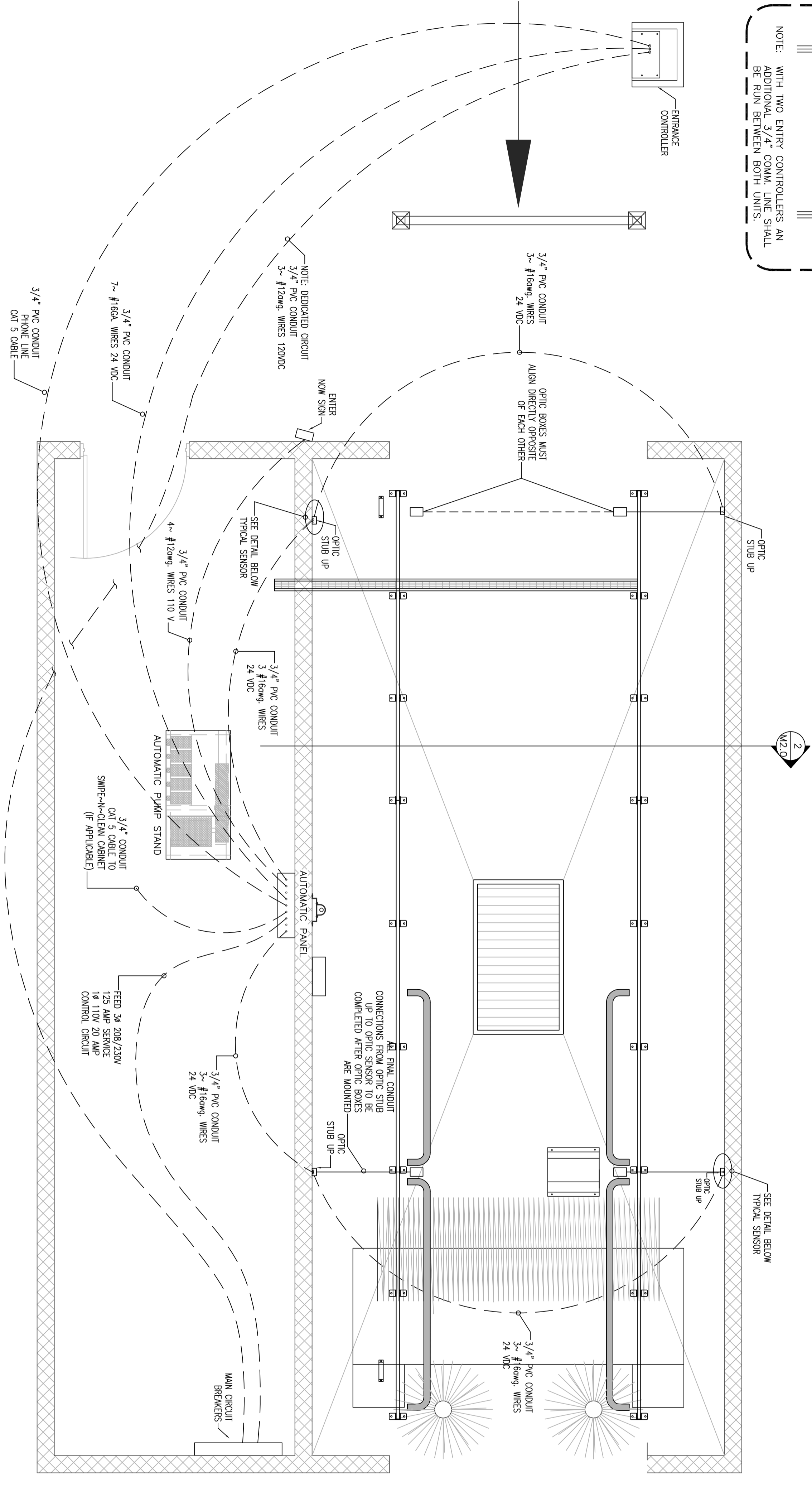
REVISIONS			

ENGINEER SEAL OR APPROVAL:	

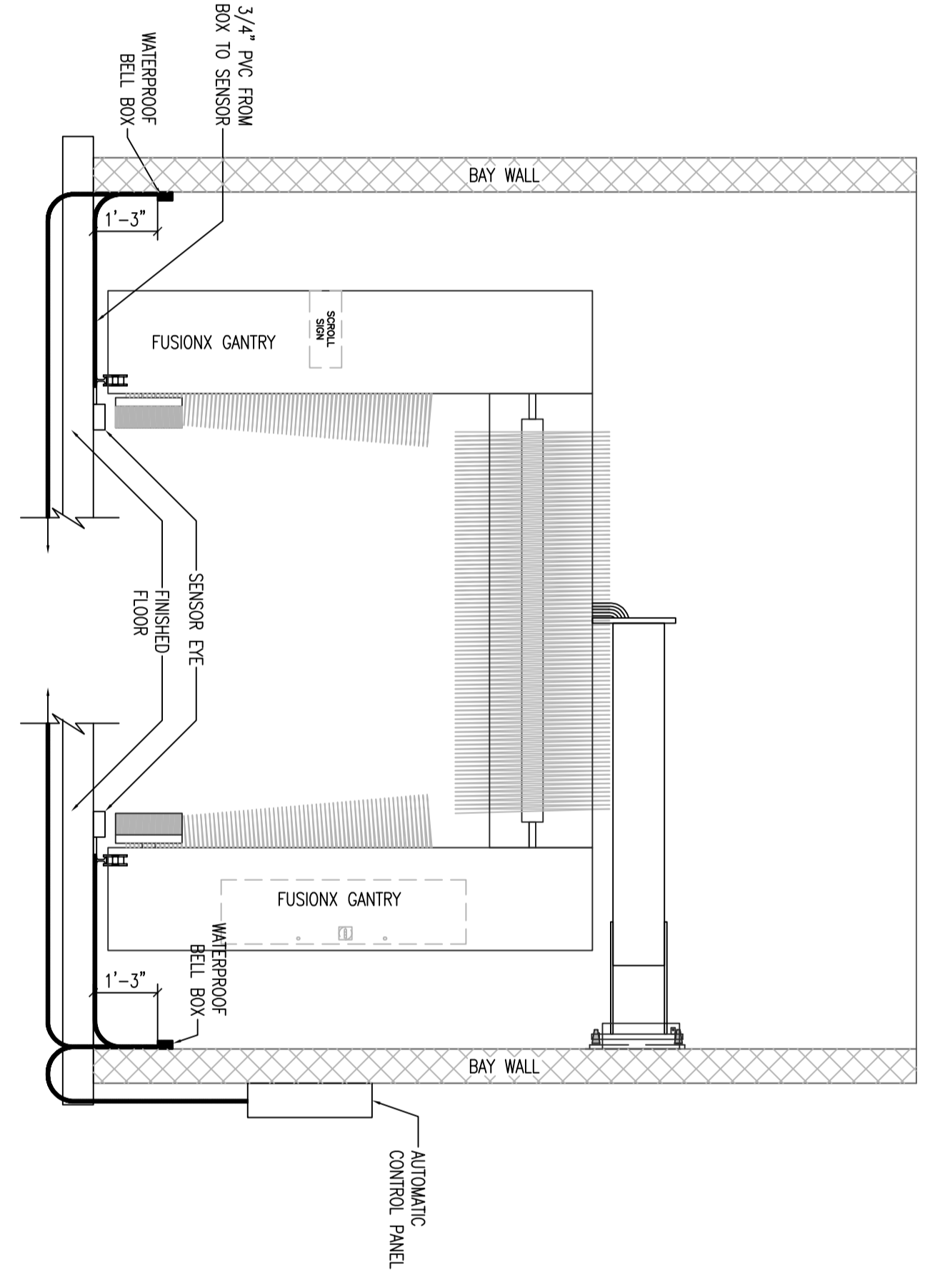
SHEET:  
**Fx-M1.A**



1 FUSION-X CONDUIT RUNS  
SCALE: 3/8" = 1'-0"



2 FUSION-X ELEVATION DETAILS  
SCALE: 3/8" = 1'-0"



OWNER: <b>JIM COLEMAN COMPANY</b> 5842 WEST 34th STREET HOUSTON, TX 77092		DRAWN BY: JTRVINO	
SHEET NAME: <b>FUSION-X ELECTRICAL CONDUIT RUNS AND ELEVATION DETAILS</b>		APPROVED BY: J. TRUELOVE / R. WITTE	
SCALE: AS SHOWN	DATE: 01/16/2012	FILE NAME: T:\W-FUSION\Fx-M2.0.dwg	
DRAWING AKO:	EQUIPMENT AKO:		

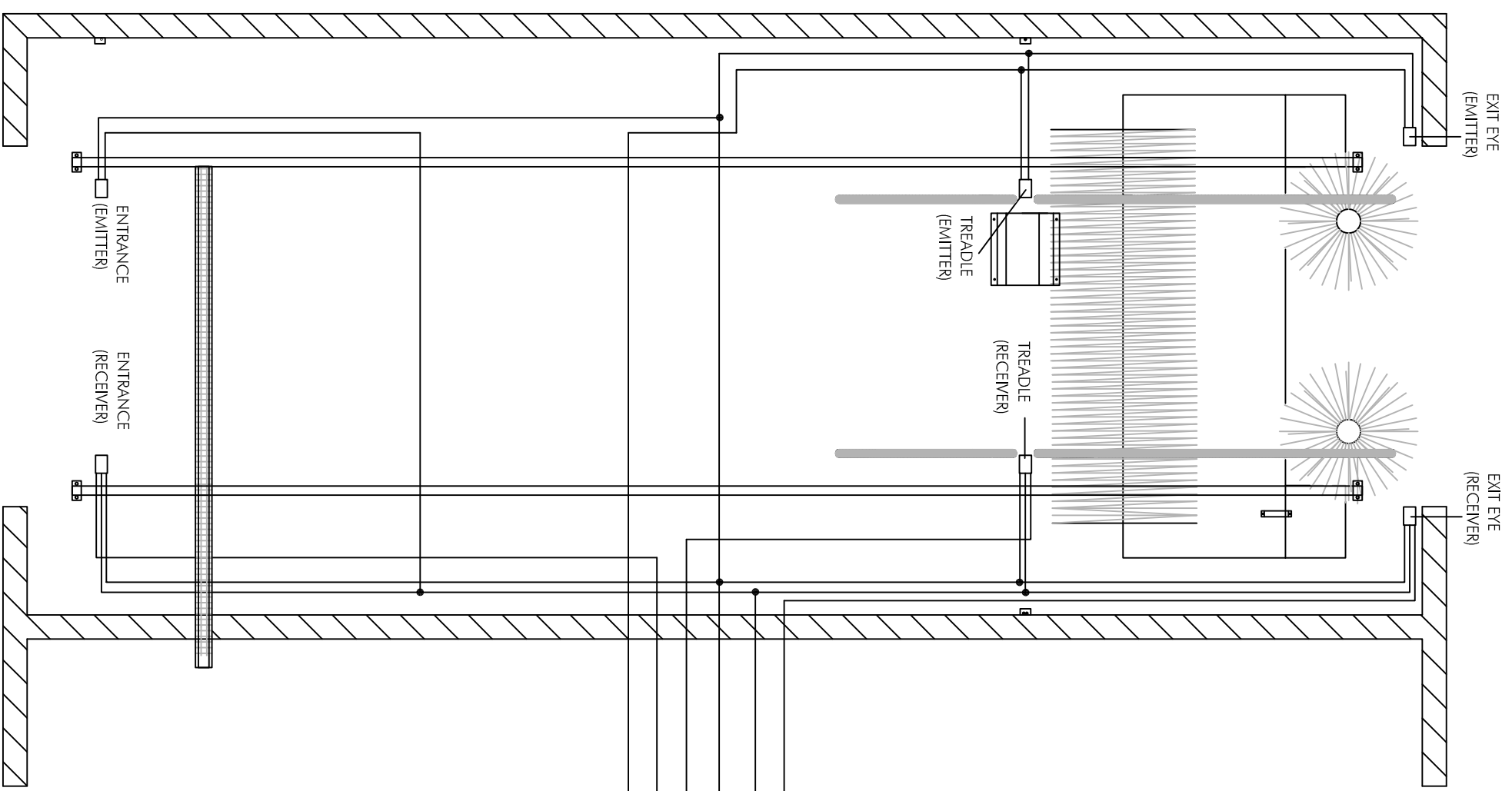
World Class Manufacturing in Car Wash Equipment

HOME OFFICE: 5842 WEST 34th STREET  
HOUSTON, TEXAS 77092  
PH: 1-800-999-9878 FAX: 713-663-8624  
www.jcolemanco.com

REVISIONS	ENGINEER SEAL OR APPROVAL:

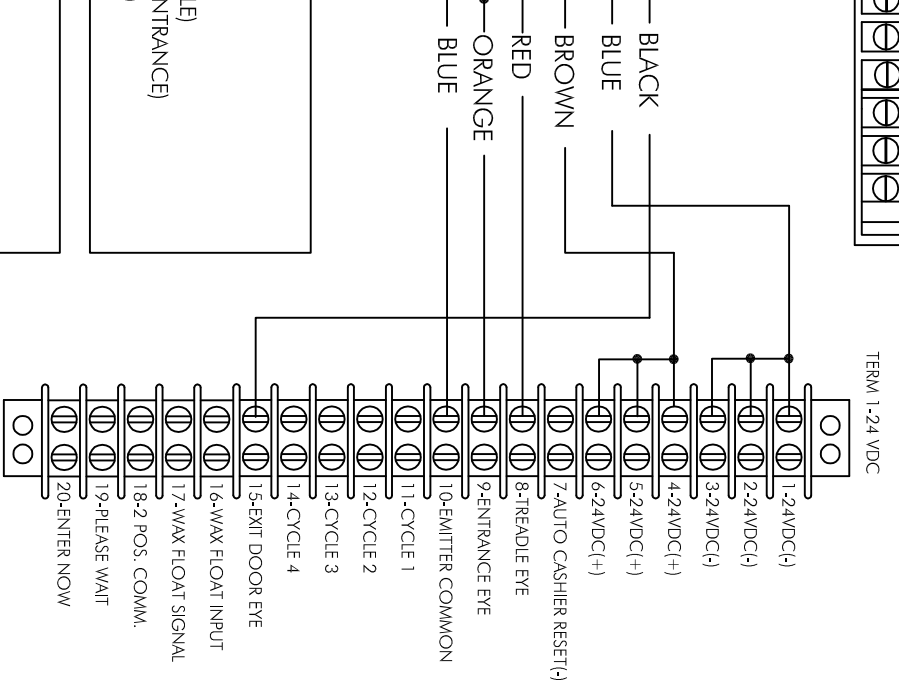
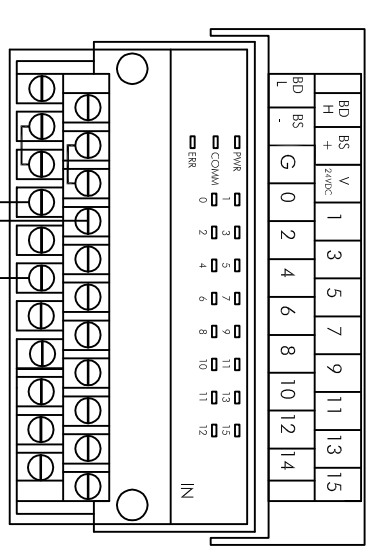
SHEET: **Fx-M2.0**

# FUSION X / E FUSION EYE WIRING DIAGRAM



FUSION X / E FUSION  
ELECTRICAL CONTROL PANEL

SRT2-ID16 (INPUTS) CHANNEL 2014

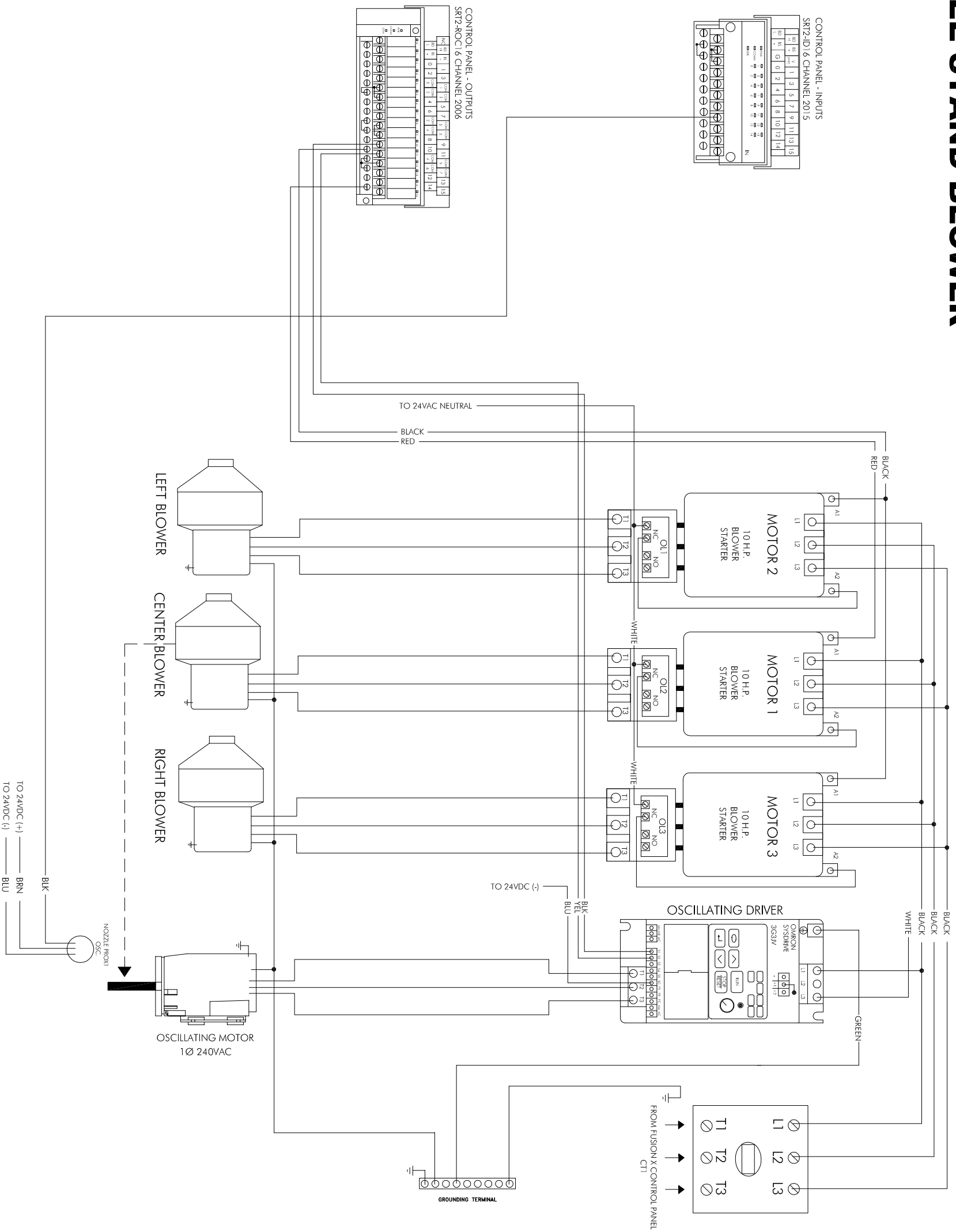


EYES RECEIVER  
BLUE - BLUE  
BROWN - BROWN  
BLACK - RED (TREADLE)  
BLACK - ORANGE (ENTRANCE)  
BLACK - BLACK (EXIT)

EYES TRANSMIT  
BLUE - BLUE  
BROWN - BROWN

NOTE: CONNECT WHT/GRY/PINK  
WIRES FROM EYE CABLE TO  
BRN (24DC+)

# FREE STAND BLOWER



REVISIONS	OWNER: JIM COLEMAN COMPANY 5842 WEST 34TH STREET HOUSTON, TX 77092			
	SHEET NAME: 120/240 FREE STAND BLOWER SCHEMATIC			
	SCALE: AS SHOWN	DATE: 01/03/07	DRAWN BY: H.PHAM	APPROVED BY: J.TRUELOVE/R.COLEMAN/R.WITTE
	DRAWING AKO: N/A	EQUIPMENT AKO: N/A	FILE NAME: T:\BLOCKS\ELECTRICAL\FUSION\IGFXA	
	ENGINEER SEAL OR APPROVAL:			

**JIM COLEMAN COMPANY**  
**HANNA**

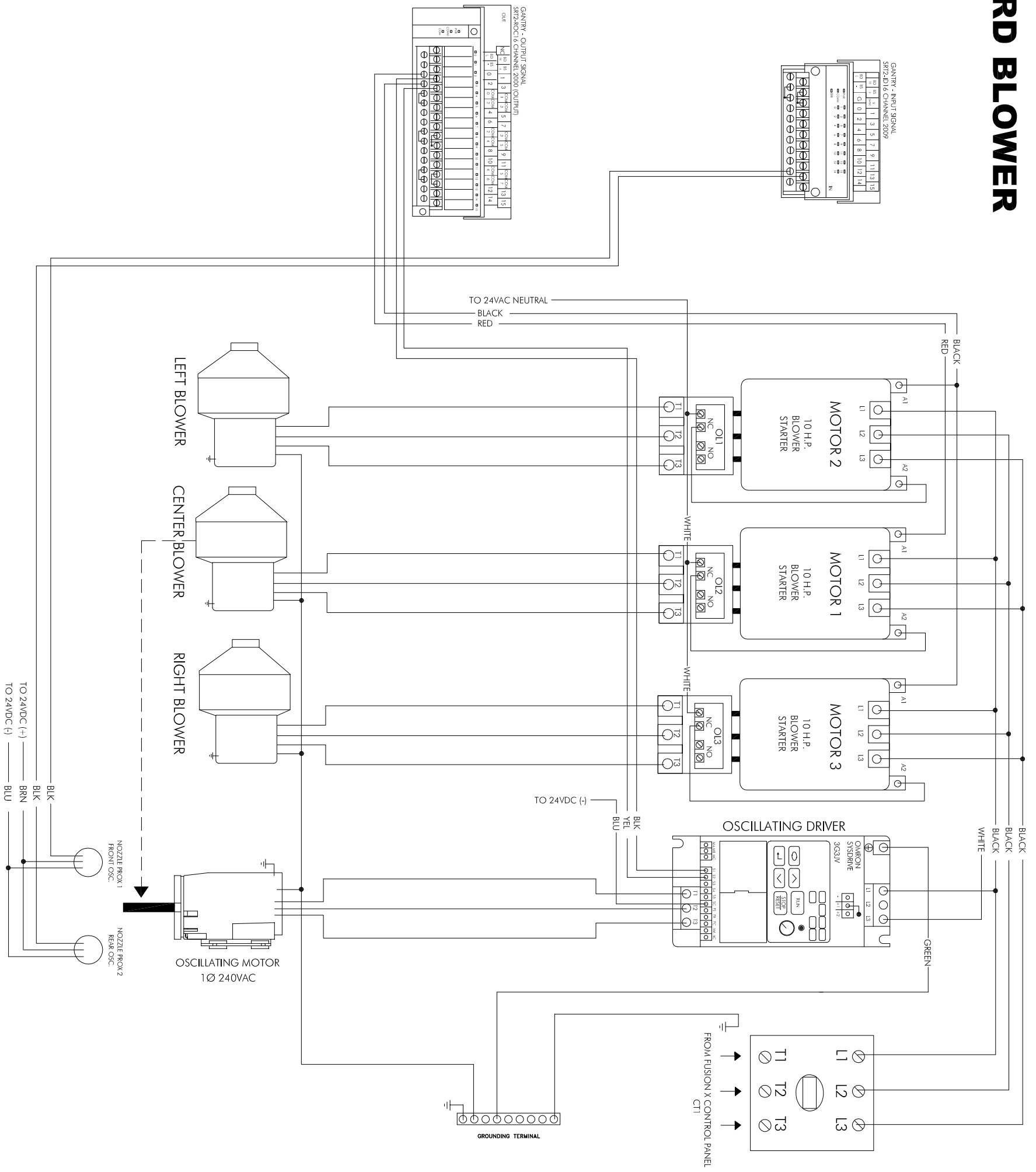
World Class Manufacturing In Car Wash Equipment

HOME OFFICE: 5842 WEST 34TH STREET  
HOUSTON, TEXAS 77092  
PH: 1-800-895-8078 FAX: 713-483-8624  
www.jcolmanco.com

SHEET:

FSB.A

# ON-BOARD BLOWER



**JIM COLEMAN COMPANY**  
HANNA  
World Class Manufacturing In Car Wash Equipment

HOME OFFICE: 5842 WEST 34TH STREET  
HOUSTON, TEXAS 77092  
PH: 1-800-895-8878 FAX: 713-483-9824  
www.jcolmanco.com

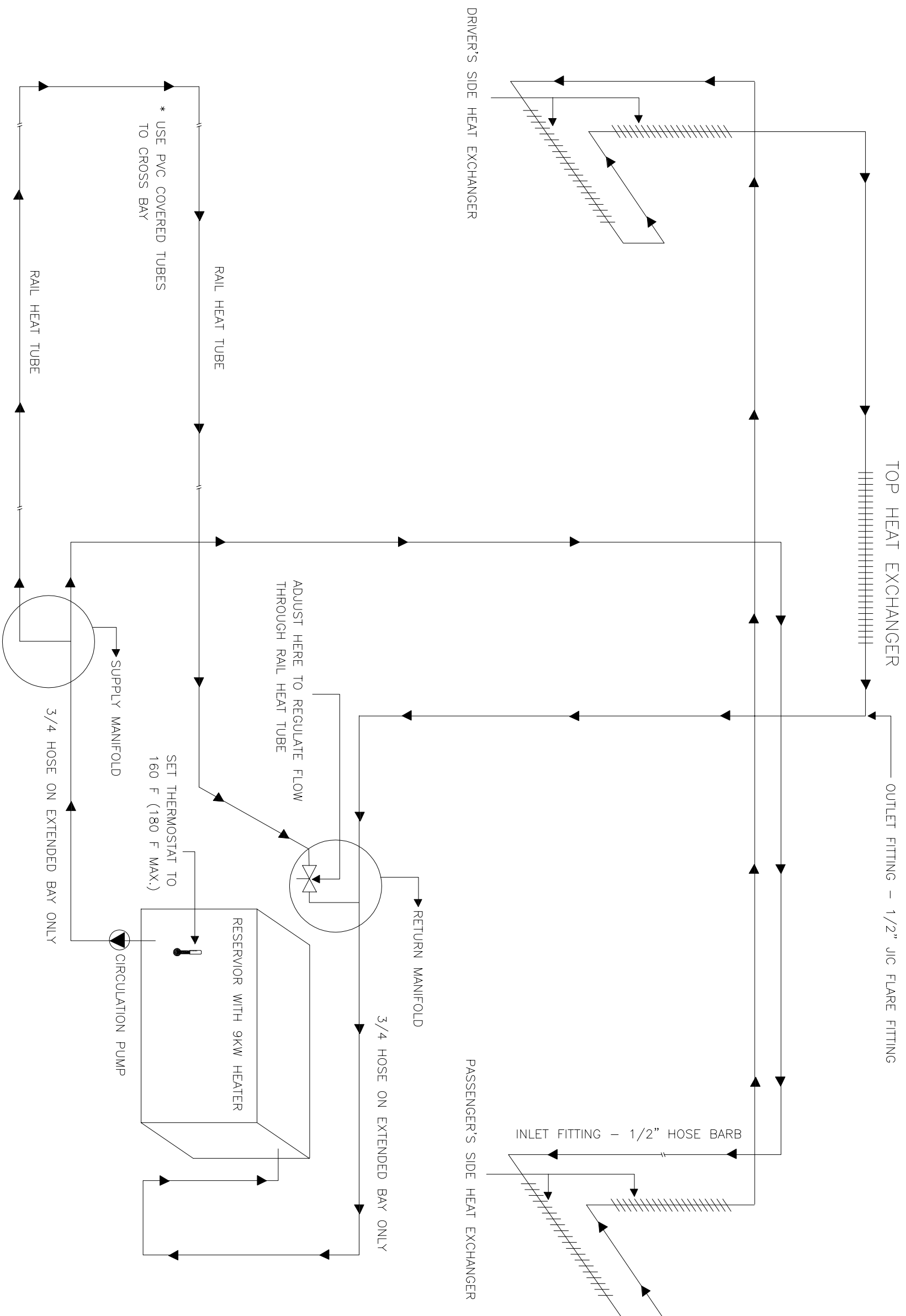
OWNER: <b>JIM COLEMAN COMPANY</b> 5842 WEST 34TH STREET HOUSTON, TX 77092			
SHEET NAME: <b>120/240 ON-BOARD BLOWER SCHEMATIC</b>			
SCALE: AS SHOWN	DATE: 01/03/07	DRAWN BY: H.PHAM	APPROVED BY: J.TRUELOVE/R.COLEMAN/R.WITTE
DRAWING AKO: N/A	EQUIPMENT AKO: N/A	FILE NAME: T:\BLOCK\ELECTRICAL\FUSION\X\GPK.A	

REVISIONS	ENGINEER SEAL OR APPROVAL:

SHEET:

OBB.A

# WINTER WIZARD WITH ELECTRIC HEATER



**COLEMAN HANNA**  
 CARWASH SYSTEMS LLC  
 AN O'HANRAHAN COLEMAN COMPANY  
 5842 WEST 34TH STREET  
 HOUSTON, TEXAS 77092  
 PH: 1-800-899-9878 FAX: 713-483-9824  
 www.colemanhanna.com

OWNER: COLEMAN HANNA CAR WASH SYSTEMS, LLC 5842 WEST 34TH STREET HOUSTON, TX 77092			
SHEET NAME: WINTER WIZARD ELECTRIC HEATER SCHEMATIC			
SCALE: AS SHOWN	DATE: 06/08/2002	DRAWN BY: JTREVINO	APPROVED BY: R. COLEMAN
DRAWING AKO:	EQUIPMENT AKO:	FILE NAME: T:\ELECTRICAL SCHEMATIC\HEATER\HT1.0.DWG	

REVISIONS	ENGINEER SEAL OR APPROVAL:

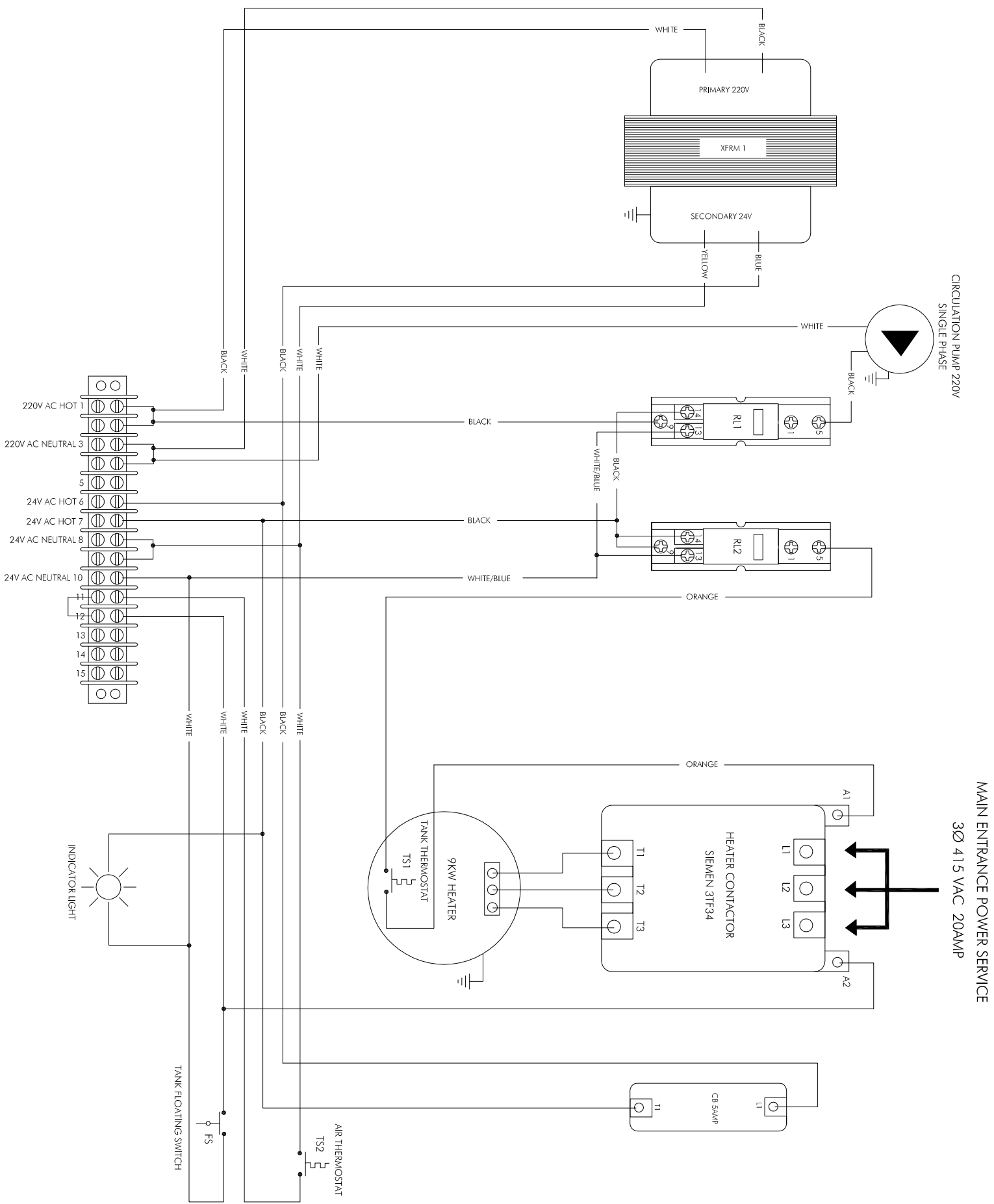
SHEET:

HT1.0





# WATER WIZARD WINTERIZATION



CIRCULATION PUMP 2220V  
SINGLE PHASE

MAIN ENTRANCE POWER SERVICE  
3Ø 415 VAC 20AMP



AN O'HANRAHAN COLEMAN COMPANY

5842 WEST 34TH STREET  
HOUSTON, TEXAS 77092  
PH: 1-800-898-8878 FAX: 713-683-9824  
www.colemanhanna.com

OWNER: COLEMAN HANNA CAR WASH SYSTEMS, LLC  
5842 WEST 34TH STREET  
HOUSTON, TX 77092

SHEET NAME: WATER WIZARD WINTERIZATION

SCALE: AS SHOWN	DATE: 03/21/2011	DRAWN BY: JTREVINO	APPROVED BY: R.COLEMAN
-----------------	------------------	--------------------	------------------------

DRAWING A.K.O.	EQUIPMENT A.K.O.	FILE NAME: T:\WATER WIZARD\W3.4.DWG
----------------	------------------	-------------------------------------

ENGINEER SEAL OR APPROVAL:

SHEET:

M3.4A